



Exploded Diagrams Target Guns

Index

Page	Model
6	EV2 Main body assembly
8	EV2 Barrel & cylinder assembly
10	EV2 Stock assembly
12	FTP-900 Main body assembly
14	FTP-900 Barrel & cylinder assembly
16	FTP-900 Stock assembly
18	FTP-900 Butt hook assembly
19	S410, S510 and Biathlon magazine assembly
20	MPR FT & 10m Trigger assembly
21	Biathlon Trigger assembly
22	HFT 500 Trigger assembly
24	MPR FT Assembly
26	HFT 500 assembly
28	HFT 500 Stock assembly
30	MPR 10m Assembly
32	MPR Biathlon assembly
34	MPR Biathlon stock assembly
36	Afla pistol
38	S200 Assembly
40	MPR cylinder assembly
41	S400, S410, S510, TDR & MPR FT Firing pot suppliment

Pneumatic Air Rifles

With proper care your Air Arms air rifle will give you many years of fine reliable service.

Remember

*Always treat your rifle as if it is loaded.
Never point your rifle at anyone even if unloaded or not cocked.
Always be sure of what lies beyond your target.
Always conduct yourself in a sportsmen like manner.*

Treat all airguns with care. They are not toys and can severely injure yourself or others and cause damage to property. Always be aware that your actions will be under the scrutiny of other members of the public who may not share your enthusiasm for air guns.

Bad practises promote bad publicity. Do not jeopardise your future enjoyment by misusing this gun.

Warning. Pre-Compressed Pneumatic (PCP) air guns work under very high pressure and must NOT be tampered with in any way.

Air Arms reserve the right to alter the construction, appearance or performance of any product without prior notification. All illustrations are for information only and do not necessarily show the exact model that was purchased.

Parts not listed in the diagrams

Stock screws

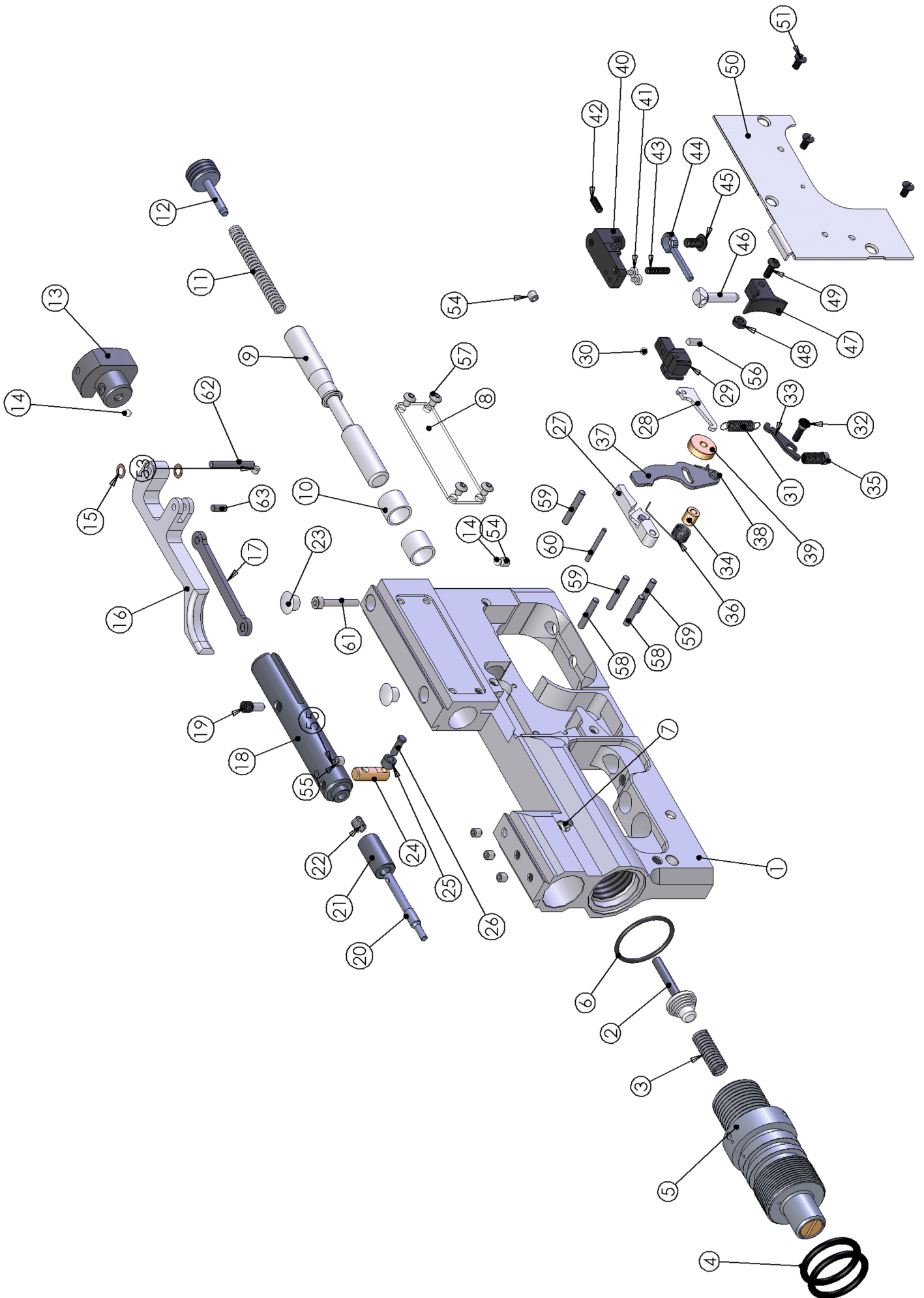
TX440	Screw used on the TX, Hunter carbine and Pro Sport models to fit the trigger gaurd
TX460	Screw used on the TX, Hunter carbine and Pro Sport models to fit the trigger gaurd
TX435	Screw used on the Pro Sport as side stock screws
TX436	Screw used on the TX and Hunter carbine models as side stock screw
S655	Washer used on the S400, S410, S510, S500 and S510TC models
S625	Screw used on the S400, S410, S510, S500 and S510TC models

Miscellaneous

S475	-	Filling filling adaptor on all fixed cylinder model pneumatics
JT210	-	Filling adaptor on the MK1 style MPR removable cylinders
S210	-	Filling adaptor for the S200 target version.

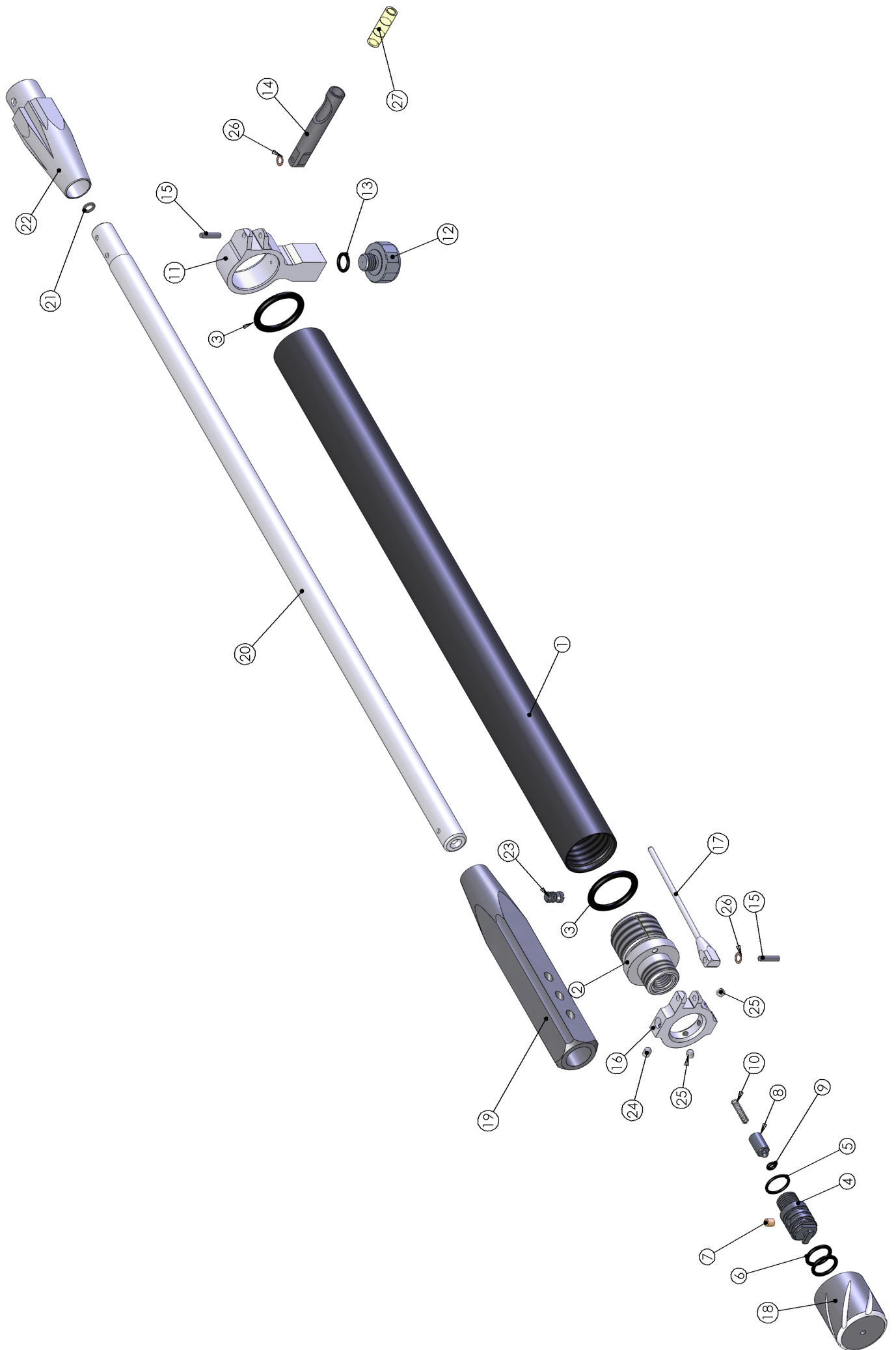
EV2 Main Body Assembly

ITEM NO.	PART NUMBER	DESCRIPTION	QTY.	ITEM NO.	PART NUMBER	DESCRIPTION	QTY.
1	E101-3	MAIN BODY	1	32	RN370	ADJUSTER PLATE SCREW	1
2	RN195	FIRING VALVE ASSY	1	33	RN365	TRIGGER WEIGHT ADJUSTER PLATE	1
3	RN198FT	FIRING VALVE SPRING	1	34	RN281	COCKING PLATE INNER SPACER	1
4	E234	O RING	2	35	RN375	TRIGGER ADJ SCREW	1
5	E219	REGULATOR ASSEMBLY	1	36	RN280	TOP SEAR SPRING	1
6	RN232	O RING	1	37	RN275FT	COCKING PLATE	1
7	RN191	ADJUSTER SCREW	1	38	RN295	COCKING PLATE SPRING	1
8	E103	CHART WINDOW	1	39	RN282	COCKING PLATE OUTER SPACER	1
9	RN200FT-AT	STRIKER FT - ANTI TAMPER	1	40	RN315	TRIGGER PIVOT BLOCK	1
10	RN130	BUSH	2	41	RN320	TRIGGER PIVOT BLOCK PAD	2
11	RN205	MAIN SPRING	1	42	RN321	M3X8 SOC SET FLAT POINT	1
12	RN210AT	POWER ADJUSTER - ANTI TAMPER	1	43	RN322	M3X12 SOC SET FLAT POINT	1
13	E143-2	COCKING ARM PIVOT BLOCK	1	44	RN325	TRIGGER BAR	1
14	E146	COCKING ARM FRICTION PAD	2	45	RN328	M4 X 8 SOC BUTTON HEAD	1
15	E160	M3 CRINKLE WASHER	2	46	RN330	TRIGGER PILLAR	1
16	E125	COCKING ARM	1	47	RN350	TRIGGER SHOE	1
17	E110	COCKING LINK	1	48	RN351	M3 NUT	1
18	E130	LOADING BOLT SHAFT	1	49	RN352	TRIGGER SCREW SHOE	1
19	E115	COCKING LINK PIVOT	1	50	RN105N	COVER PLATE	1
20	E135	PELLET PROBE	1	51	RN106	M3X6 C/SUNK SLOTTED SCREW	3
21	E136	DETENT BUSH	1	52	E122	M4 X 4 SKT SET FL PT ST/ST	3
22	E137	DETENT SPRING	1	53	TX239	M3 x 3 SOC SET FLAT PT	1
23	E102	SHORTY PLUG	2	54	TX228	M4 X 4 SKT SET FL PT	2
24	E140	LOADING SHAFT POST	1	55	E113	M4 X 4 SOC SET CONE PT ST/ST	2
25	E140B	LOADING POST ROLLER	1	56	RN310	M3 X 8 SKT SET CONE PT MODIFIED	1
26	E140A	LOADING POST ROLLER PIN	1	57	E104	M3 X 4 SKT BTN	4
27	RN284	TOP SEAR ASSEMBLY	1	58	RN357	3x17.8 PIN	2
28	RN300	MIDDLE SEAR	1	59	RN355	3x19.8 PIN	3
29	RN305	MIDDLE SEAR BLOCK	1	60	RN356	2x19.8 PIN	1
30	RN311	MIDDLE SEAR BALL	1	61	E145	M3 X 20 SKT CAP	1
31	RN360	TRIGGER WEIGHT SPRING	1	62	E144	3x23.8 PIN	1
				63	E127	3x11.8 PIN	1



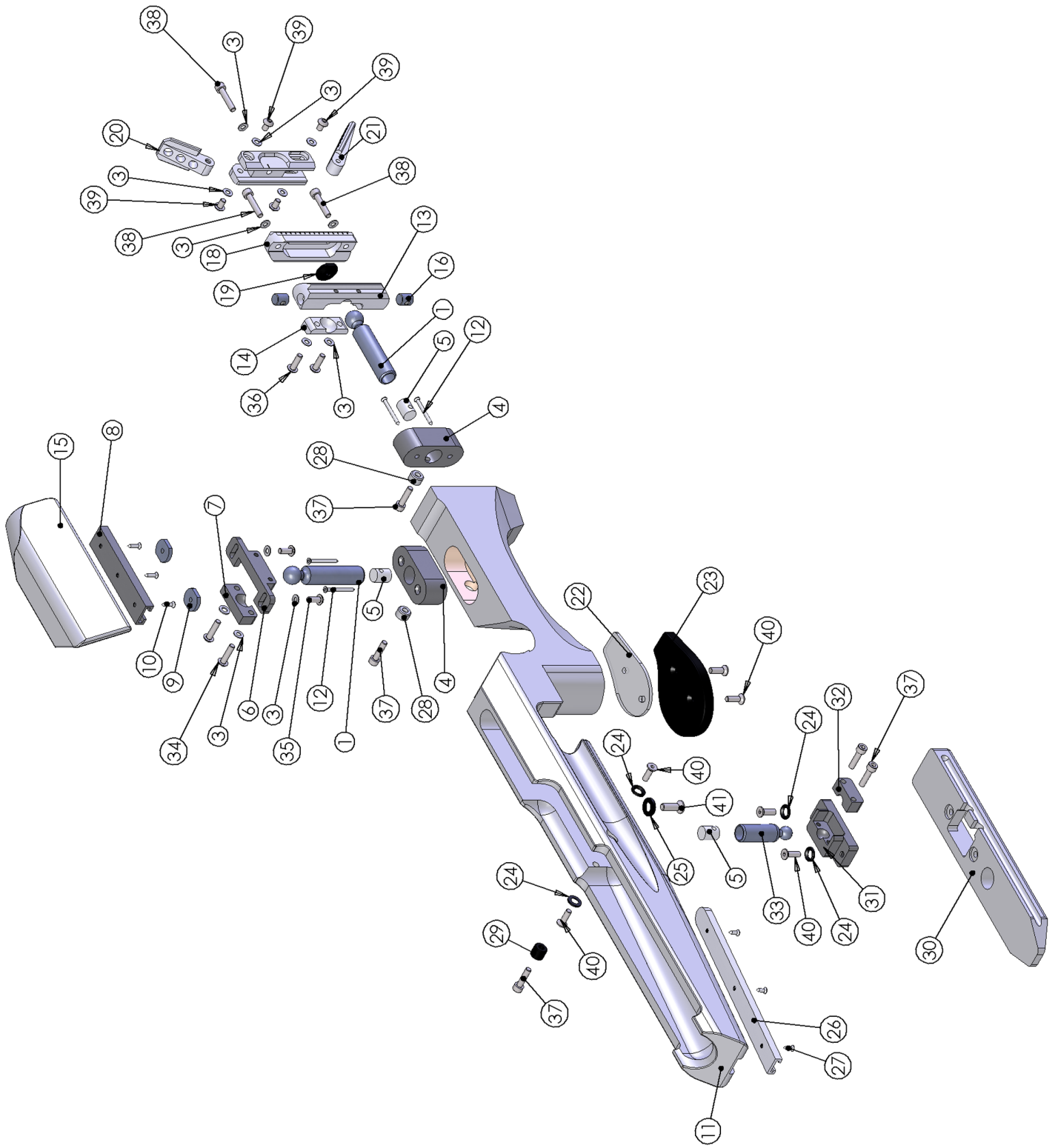
EV2 Barrel & Cylinder Assembly

ITEM NO.	PART NUMBER	DESCRIPTION	QTY.	ITEM NO.	PART NUMBER	DESCRIPTION	QTY.
1	S335	CYL TUBE - STD NICKEL	1	17	E283	WINDAGE INDICATOR	1
2	E491	FILLING VALVE BODY	1	18	E483BK	END CAP - BLACK	1
3	RN234	O RING	2		E483B	END CAP - BLUE	
4	S472	MALE CONNECTOR	1		E483R	END CAP - RED	
5	S484	O RING	1	19	E460-2BK-A	MUZZLE END ASSY - BLACK	1
6	S474	O RING	2		E460-2B-A	MUZZLE END ASSY - BLUE	
7	S471	SINTERED FILTER	1		E460-2R-A	MUZZLE END ASSY - RED	
8	S473	FILLING VALVE	1	20	E112N	BARREL	1
9	S327	O RING	1	21	FP121	O RING	1
10	S319	FILLING VALVE SPRING	1	22	E120-2	BARREL SUPPORT	1
11	E440	GAUGE MOUNT	1	23	E460A	LOCKING STUD	1
12	S645	INDICATOR GAUGE	1	24	E281	M4 X 6 SKT SET CONE PT ST/ST	1
13	RN219-9	O RING	1	25	E122	M4 X 4 SKT SET FL PT ST/ST	2
14	E445	LEVEL HOUSING	1	26	E160	M3 CRINKLE WASHER	2
15	TX297	PIN	2	27	E445V	LEVEL	1
16	E282	FRONT CLAMP	1				



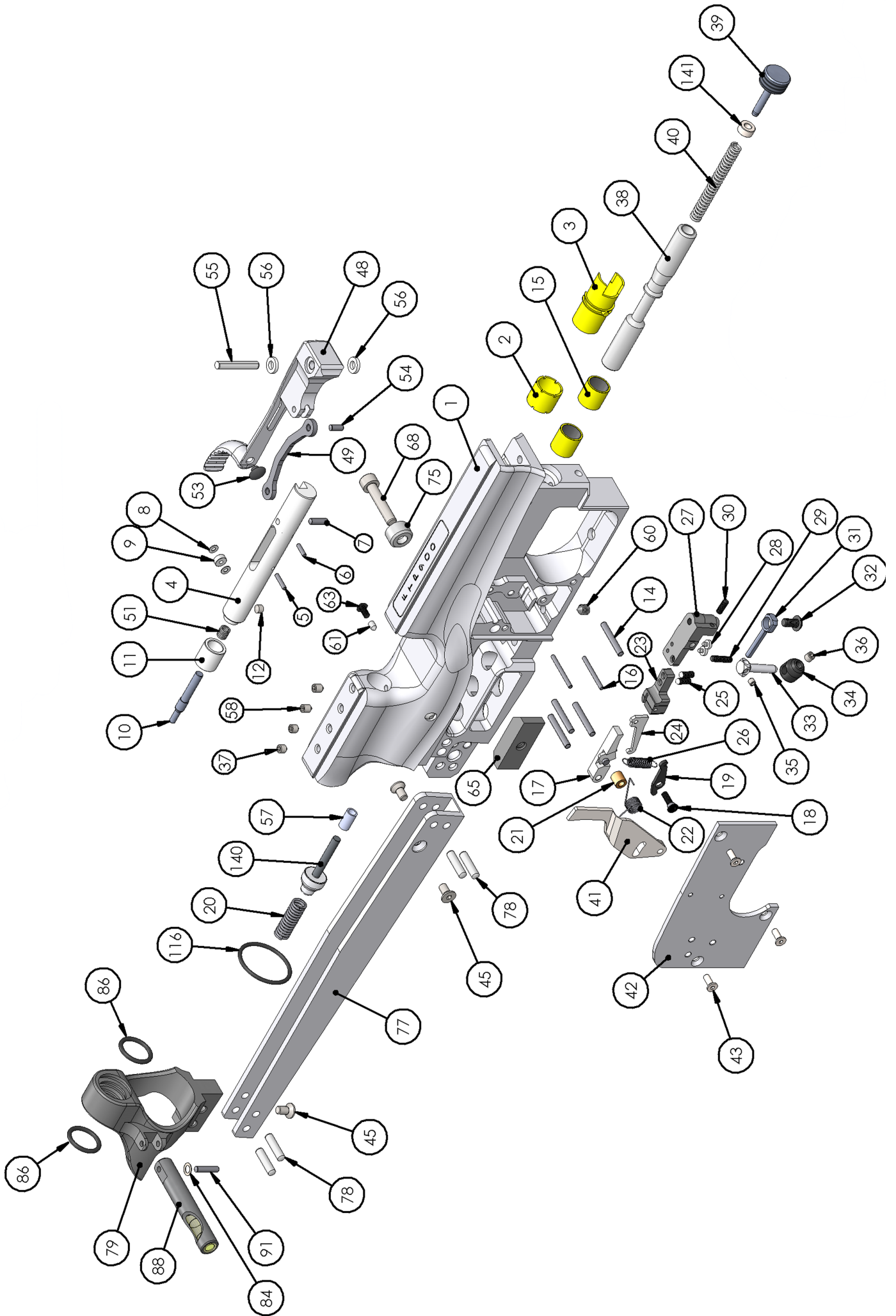
EV2 Stock assembly

ITEM NO.	PART NUMBER	DESCRIPTION	QTY.	ITEM NO.	PART NUMBER	DESCRIPTION	QTY.
1	E310	CHEEK PIECE PILLAR	2	22	E458	PALM REST SPACER	1
3	RN431	WASHER	13	23	E454	PALM REST	1
4	E315	CHEEK PIECE PILLAR BOTTOM PLATE	2	24	RN385	FRONT STOCK WASHER	4
5	E320	PILLAR NUT	3	25	RN386	REAR STOCK WASHER	1
6	E325	CHEEK PIECE TOP CLAMP - PT1	1	26	E441	RAIL	1
7	E330	CHEEK PIECE TOP CLAMP - PT 2	1	27	RN445	No 6 1 1/4" POZI CSK	3
8	E335	CHEEK PIECE RAIL	1	28	E425	ADJUSTER LOCKING BUSH - EV2 MK3	2
9	E340	RAIL NUT	2	29	RN425	ADJUSTER LOCKING BUSH	1
10	KS445	No 6 3/8" POZI CSK	3	30	E510-2_2	EV2 STOCK - FORE END	1
11	E510-1/2	EV2 STOCK - MAIN BODY	1	31	E345-1	FORE END CLAMP - PT1	1
12	RN435	No 6 1 1/4" POZI CSK	4	32	E345-2	FORE END CLAMP - PT2	1
13	E465-1N	BUTT PAD BACKING PLATE	1	33	E312	PALM REST PILLAR	1
14	E465-2N	BUTT PAD BACKING PLATE CLAMP	1	34	E453	M5 X 20 SKT CAP ST/ST	2
15	E510-3	EV2 STOCK - CHEEK PIECE	1	35	E496	M5 X 12 SKT CAP ST/ST	2
16	E471	BUTT PAD SWIVEL PIN	2	36	E463	M5 X 16 SKT BTN ST/ST	2
17	E467N	SLIDER MK3	1	37	E420	M5 X 20 SKT CAP ST/ST	5
18	E457	BUTT PAD SWIVEL PLATE	1	38	RN420	M5 X 25 SKT CAP ST/ST	3
19	E462	BUTT PAD LOCKING PLATE	1	39	E476	M5 X 8 SKT BTN ST/ST	4
20	E455-1	TOP ARM	1	40	E456	M5 X 16 CSK SKT ST/ST	6
21	E455-2	BOTTOM ARM	1	41	RN380	M6 X 20 CSK SKT	1



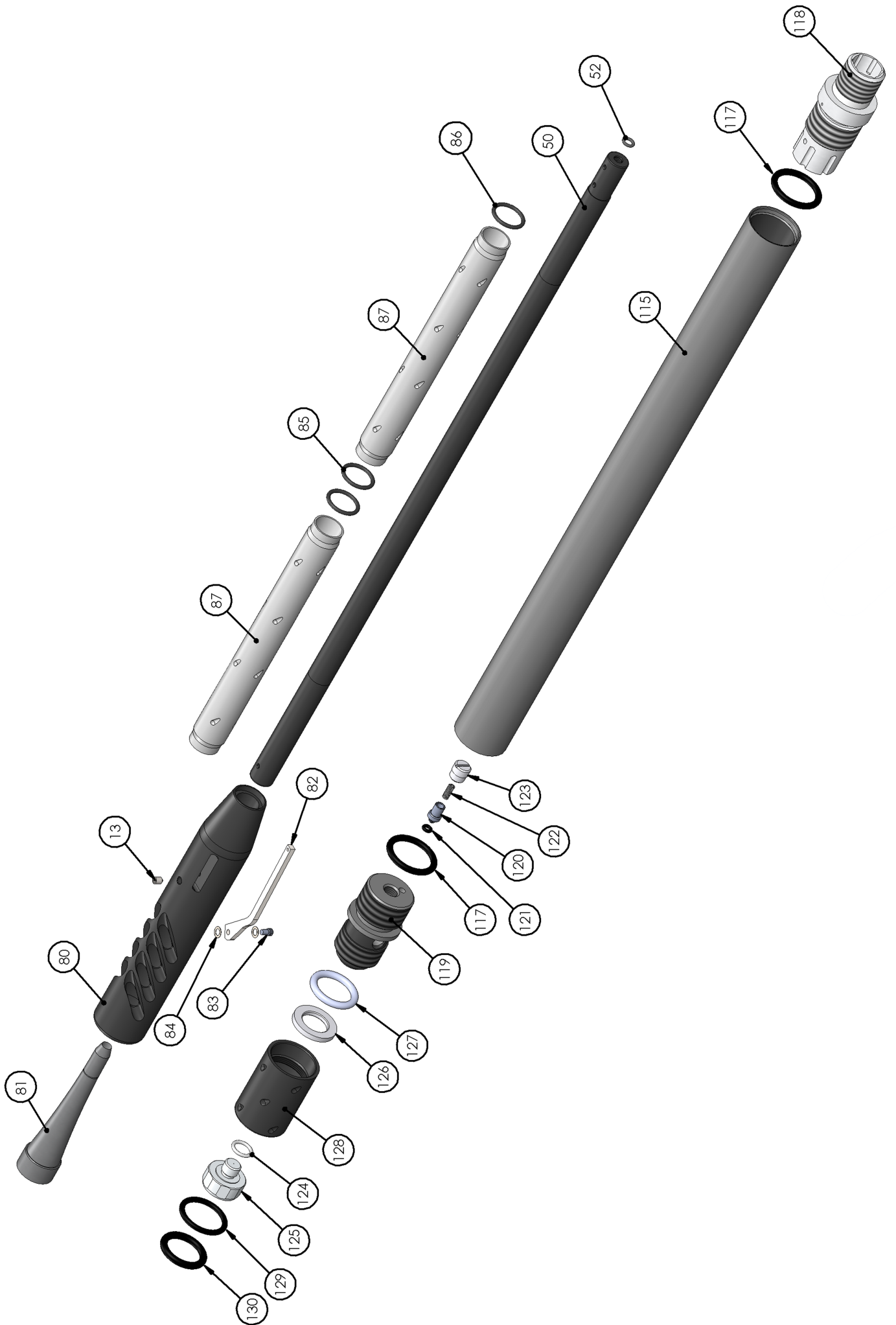
FTP-900 Main body assembly

ITEM NO.	PART NUMBER	DESCRIPTION	QTY.	ITEM NO.	PART NUMBER	DESCRIPTION	QTY.
1	E760	MAIN BODY - FTP900	1	38	RN200FT-AT	STRIKER	1
2	E670	LOADING BOLT SHAFT FRONT BEARING	1	39	RN210AT	POWER ADJUSTER - ANTI TAMPER	1
3	E665	LOADING BOLT SHAFT REAR BEARING	1		RN210E	POWER ADJUSTER - EXPORT	
4	E675	LOADING BOLT SHAFT	1	40	RN205	MAIN SPRING	1
5	E695	2 X 10 DOWEL	1	41	E680	COCKING LEVER	1
6	E705	2 X 8 DOWEL	1	42	E720	SIDE PLATE	1
7	E690	4 X 10 DOWEL	1	43	E795	M3 X 8 CSK SKT	3
8	E780	2mm WASHER	2	45	E815	M4 X 8 CSK SKT	3
9	E750	COCKING LEVER BEARING	1	48	E715	COCKING ARM	1
10	E725	PELLET PROBE	1	49	E685	COCKING LINK	1
11	E730	DETENT BUSH	1	51	E137	DETENT SPRING	1
12	E113	M4 X 4 SKT SET CONE PT ST/ST	1	53	TX227	BUFFER	1
14	E785	3 X 22 ROLLER	4	54	E127	3 X 11.8 ROLLER	1
15	RN103	STRIKER BUSH	2	55	E805	4 X 24 EXTRACTABLE DOWEL	1
16	E790	2 X 22 ROLLER	2	56	E810	COCKING ARM WASHER	2
17	RN284	TOP SEAR ASSEMBLY	1	57	E222	FIRING VALVE BUSH	1
18	RN370	ADJUSTER PLATE SCREW	1	58	E281	M4 X 6 SKT SET CONE PT ST/ST	2
19	RN365	TRIGGER WEIGHT ADJUSTER PLATE	1	60	TX381	M5 X 6 SKT SET CONE PT	1
20	RN198FT	FIRING VALVE SPRING	1	61	RN191	ADJUSTER SCREW	1
21	RN281	COCKING PLATE INNER SPACER	1	62	S680	BLANKING SCREW	1
22	RN280	TOP SEAR SPRING	1	65	E415	FORE-END LOCKING PLATE	1
23	RN305-2	MIDDLE SEAR BLOCK	1	68	RN420	M5 X 25 SKT CAP ST/ST	1
24	RN300	MIDDLE SEAR	1	75	E912	FORE END ADJUSTER LOCKING BUSH	1
25	RN310	TRIGGER ADJUSTER SCREW	2	77	E630	BARREL CLAMP RAIL	1
26	RN360	TRIGGER WEIGHT SPRING	1	78	PS245	M6 X 16 DOWEL	4
27	RN315	TRIGGER PIVOT BLOCK	1	79	E620	BARREL CLAMP - RH	1
28	RN320	TRIGGER PIVOT BLOCK PAD	2		E620-L	BARREL CLAMP - LH	
29	RN322	M3 X 12 SKT SET FLAT POINT	1	84	E160	M3 CRINKLE WASHER	2
30	RN321	M3 X 8 SKT SET FLAT POINT	1	86	E625	SHROUD BUFFER O RING 14 X 2	3
31	RN325	TRIGGER BAR	1	88	E445A	LEVEL HOUSING ASSY - RH	1
32	RN328	M4 X 8 SKT BTN HEAD	1		E445A-LH	LEVEL HOUSING ASSY - LH	
33	RN330	TRIGGER PILLAR	1	91	TX297	3 X 13.8 ROLLER	1
34	E745	TRIGGER BUTTON	1	116	E935	24 X 2 O RING	1
35	TX239	M3 X 3 SKT SET FT PT	1	140	E885-2	FTP-900 - FIRING VALVE ASSY	1
36	TX228	M4 X 4 SKT SET FL PT	1	141	RN210-4mm	STRIKER SPACER	1
37	E122	M4 X 4 SKT SET FL PT ST/ST	2				



FTP-900 barrel and cylinder assembly

ITEM NO.	PART NUMBER	DESCRIPTION	QTY.	ITEM NO.	PART NUMBER	DESCRIPTION	QTY.
13	E281	M4 X 6 SKT SET CONE PT ST/ST	1	118	E880A	FTP-900 REGULATOR	1
50	E700	BARREL	1	119	E645-1	GAUGE BODY	1
52	FP121	4.5 X 1.5 NBR70	1	120	AF440	FILLING VALVE	1
80	E600	MUZZLE END BODY - RH	1	121	S327	BS005 O RING 90 SHURE	1
	E600-L	MUZZLE END BODY - LH		122	S319	FILLING VALVE SPRING	1
81	E605	MUZZLE END INSERT	1	123	AF430	F/VALVE SPRING RETAINER	1
82	E610	WIND INDICATOR	1	124	RN219-7	BS012	1
83	E615	WIND INDICATOR SCREW	1	125	S645	INDICATOR GAUGE	1
84	E160	M3 CRINKLE WASHER	2	126	E645-3	RETAINING RING	1
85	E625-2	SHROUD BUFFER O RING 16 X 2	2	127	E645-4	RETAINING RING O RING	1
87	E635	SHROUD	2	128	E645-2	GAUGE COVER	1
115	S335	CYL TUBE	1	129	E234	23 X 3 O RING	1
117	RN234	BS213 O RING	2	130	RN241	20 X 4 O RING	1

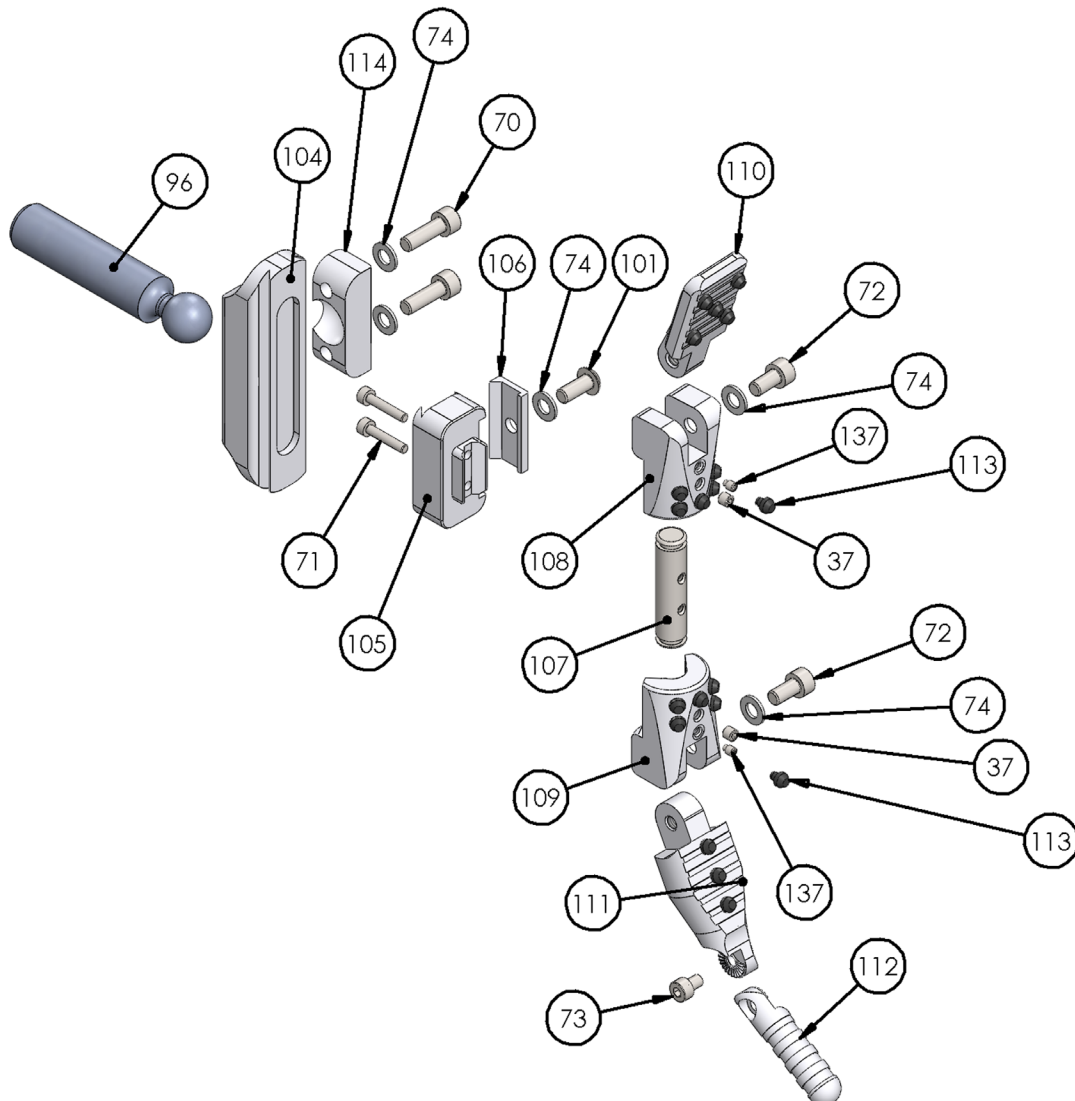


FTP-900 stock assembly

ITEM NO.	PART NUMBER	DESCRIPTION	QTY.	ITEM NO.	PART NUMBER	DESCRIPTION	QTY.
44	E456	M5 X 16 CSK SKT ST/ST	4	98	E910	ADJUSTER LOCKING BUSH - FTP-900	2
46	RN380	M6 X 20 CSK SKT	1	99	E325	CHEEK PIECE TOP CLAMP - PT1	1
64	E755-1	PALM REST PILLAR	2	100	E330	CHEEK PIECE TOP CLAMP - PT 2	1
66	E765-1	FORE END CLAMP - PT 1	1	101	E496	M5 X 12 SKT BT ST/ST	2
67	E765-2	FORE END CLAMP - PT2	1	102	E335	CHEEK PIECE RAIL	1
68	RN420	M5 X 25 SKT CAP ST/ST	3	103	E340	RAIL NUT	2
69	E420	M5 X 20 SKT CAP ST/ST	2	131	E800-1RL	FTP-900 - STOCK MAIN BODY - RH	1
70	E820	M5 X 16 SKT CAP ST/ST	2		E801-1RL	FTP-900 - STOCK MAIN BODY - LH	
74	RN431	WASHER	7	132	E800-2RL	FTP-900 - CHEEK PIECE - RH	1
76	RN385	STOCK WASHER - FRONT	4		E801-2RL	FTP-900 - CHEEK PIECE - LH	
84	E160	M3 CRINKLE WASHER	2	133	E800-3RL	FTP-900 - FORE-END	1
90	RN386	STOCK WASHER - REAR	1	134	E800-4RL	FTP-900 - PALM SHELF - RH	1
92	E441	RAIL	1		E801-4RL	FTP-900 - PALM SHELF - LH	
93	KS445	No 6 X 1/2" POZI CSK	3	135	E900	PALM SHELF NUT	2
94	E315	CHEEK PIECE PILLAR BOTTOM PLATE	2	136	E895	M3 X 40 SKT CAP	2
95	RN435	No 6 X 1 1/4" POZI CSK	4	138	E920-.5	SHIM - .50mm	1
96	E310	CHEEK PIECE PILLAR	1	139	RN445	No6 X 3/8" POZI C/SUNK	3
97	E320	PILLAR NUT	2				

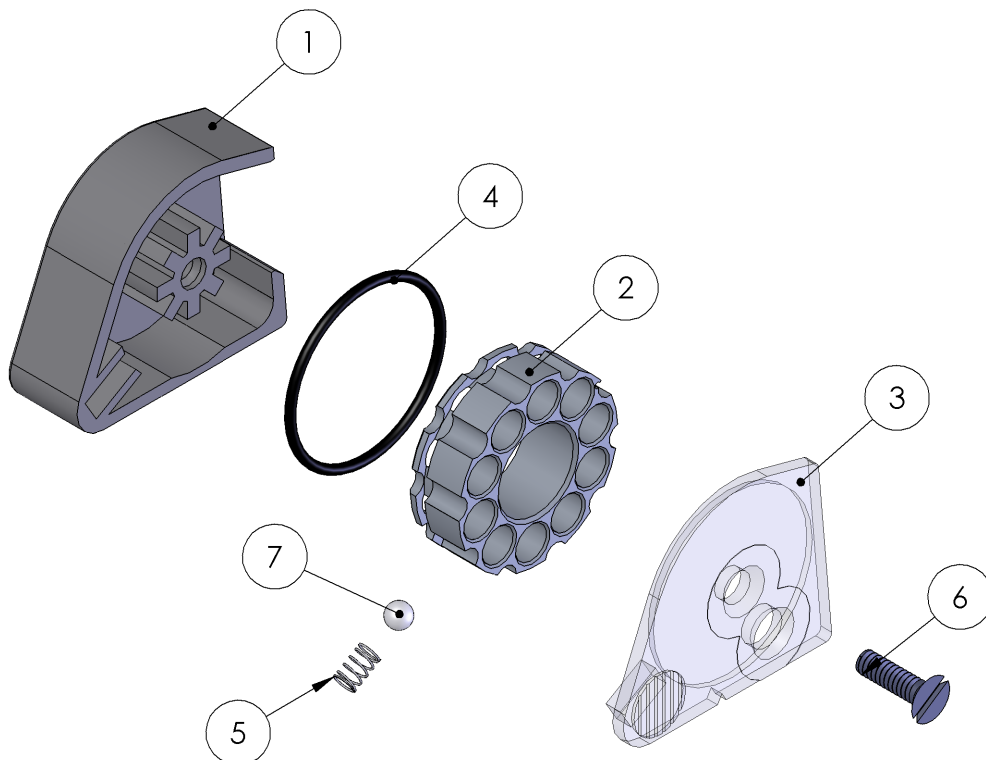
FTP-900 butt hook assembly

ITEM NO.	PART NUMBER	DESCRIPTION	QTY.
37	E122	M4 X 4 SKT SET FL PT ST/ST	2
70	E820	M5 X 16 SKT CAP ST/ST	2
71	RN102A	M3 X 16 SKT CAP	2
72	E845	M5 X 10 SKT CAP ST/ST	2
73	E850	M4 X 6 SKT CAP ST/ST	1
74	RN431	WASHER	5
96	E310	CHEEK PIECE PILLAR	1
101	E496	M5 X 12 SKT BT ST/ST	1
104	E825	BUTT PAD BACKING PLATE - PT1	1
105	E835	PIVOT PLATE - PT1	1
106	E840	PIVOT PLATE - PT2	1
107	E855	PIVOT BAR	1
108	E860-T	TOP ARM SUPPORT	1
109	E860-B	BOTTOM ARM SUPPORT	1
110	E865-T	TOP ARM	1
111	E865-B1	BOTTOM ARM	1
112	E865-B2	BOTTOM ARM EXTENSION	1
113	E870	BUTT PAD GROMMET	20
114	E830	BUTT PAD BACKING PLATE - PT2	1
137	E905	M3 X 4 DOG PT	2



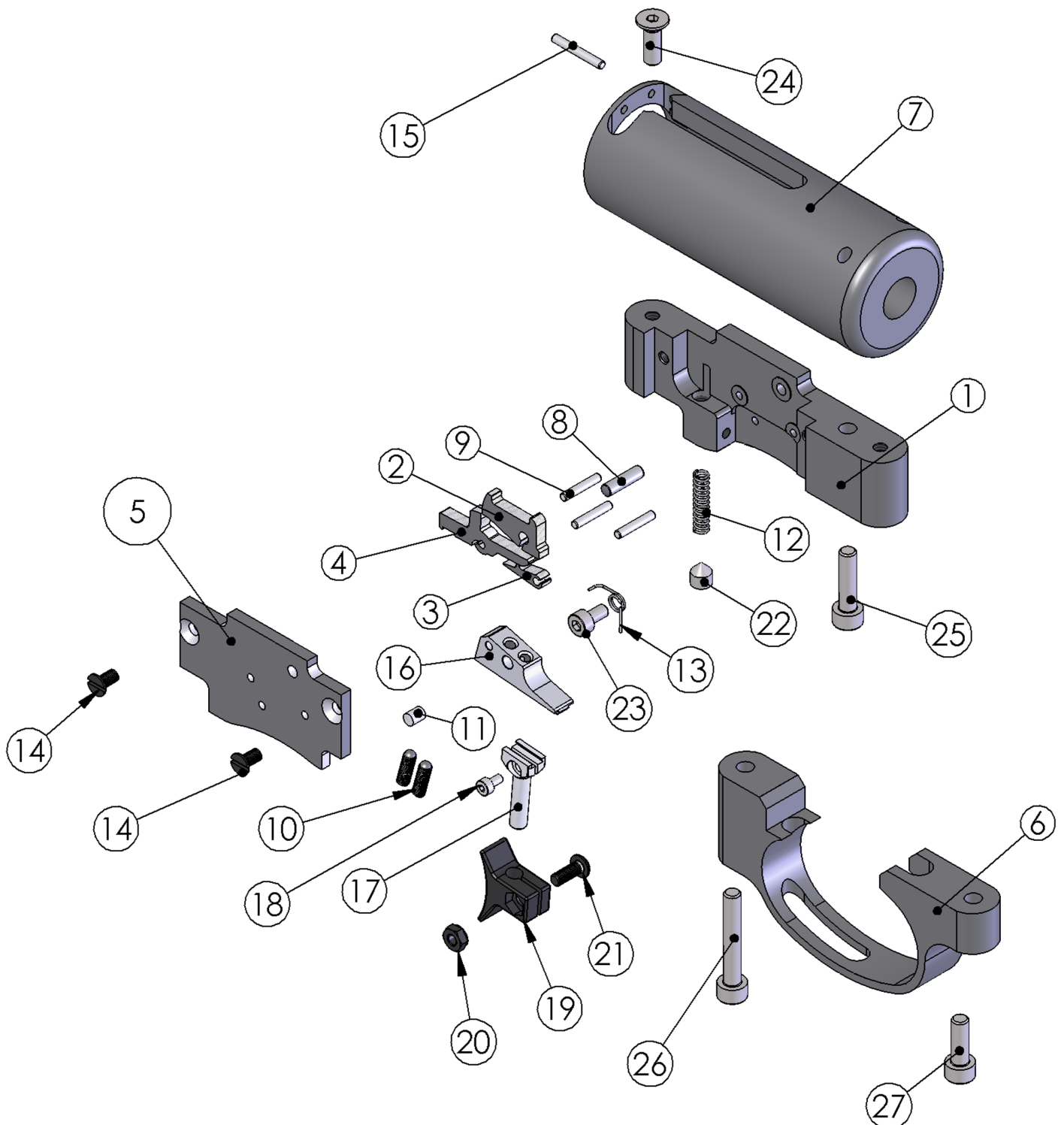
S410, S510 & MPR Biathlon magazine assembly

ITEM NO.	PART NUMBER	DESCRIPTION	QTY.
1	S559-3A	MAGAZINE BODY - .177	1
	S559-3B	MAGAZINE BODY - .22	
	S559-3C	MAGAZINE BODY - .25	
	S559-3D	MAGAZINE BODY - .20	
2	S555-3A	PELLET CARRIER - .177	1
	S558-3	PELLET CARRIER - .177 - 5 SHOT	
	S555-3B	PELLET CARRIER - .22	
	S557-3	PELLET CARRIER - .22 - 5 SHOT	
	S555-3C	PELLET CARRIER - .25	
	S555-3D	PELLET CARRIER - .20	
3	S559-2A	MAGAZINE COVER - .177 - YELLOW	1
	S559-2A-US	MAGAZINE COVER - .177 - GREY	
	S559-2B	MAGAZINE COVER - .22 - YELLOW	
	S559-2B-US	MAGAZINE COVER - .22 - GREY	
	S559-2C	MAGAZINE COVER - .25 - YELLOW	
	S559-2C-US	MAGAZINE COVER - .25 - GREY	
	S559-2D	MAGAZINE COVER - .20 - YELLOW	
4	S556	22 x 1.5 O RING	1
5	S559-4	MAGAZINE SPRING	1
6	S559-1	6-32 UNC X 1/2" CSK SLOTTED SCREW	1
7	S559-5	BALL BEARING	1



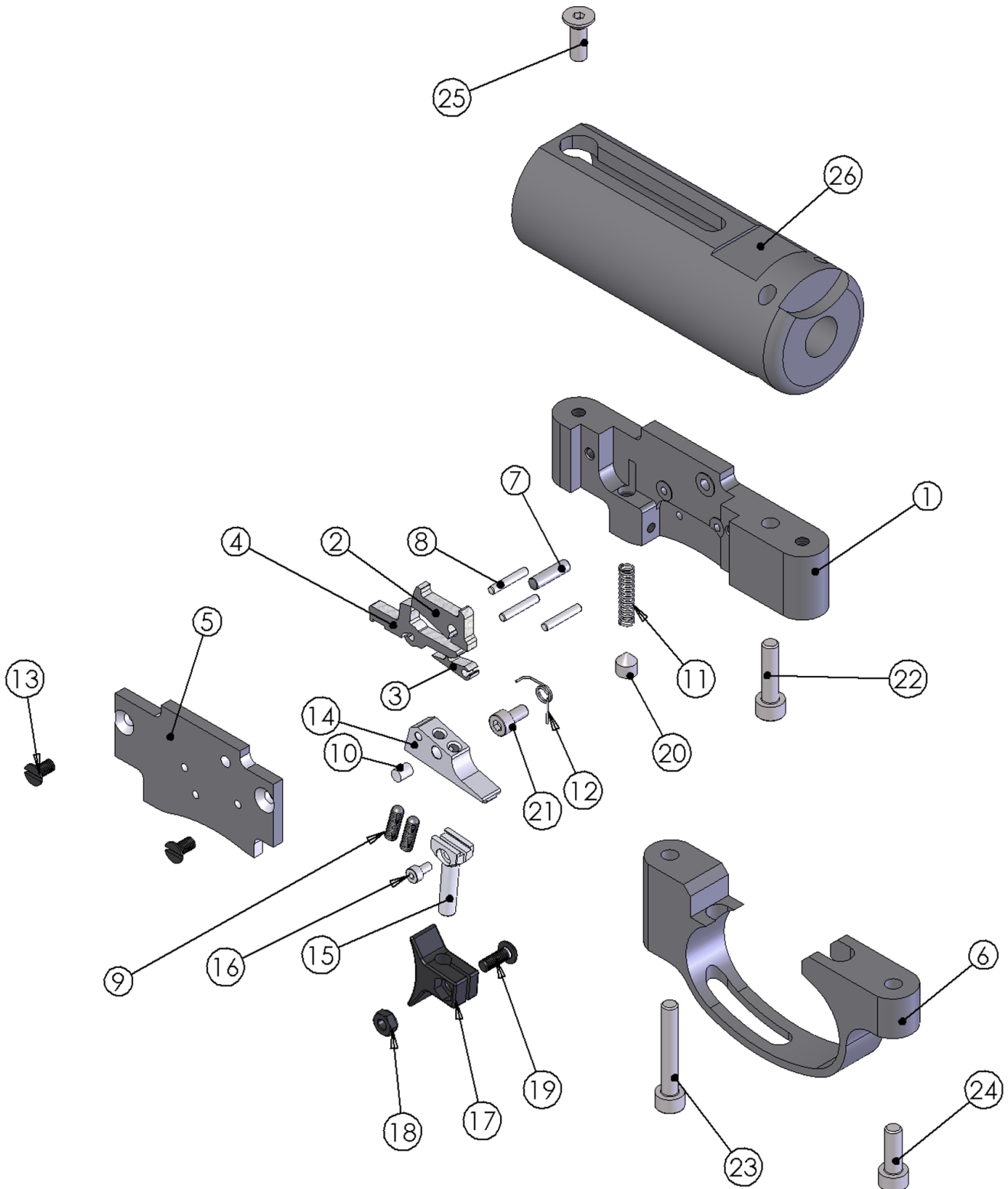
MPR FT & 10m Trigger assembly

ITEM NO.	PART NUMBER	DESCRIPTION	QTY.	ITEM NO.	PART NUM	DESCRIPTION	QTY.
1	S313	CHASSIS	1	15	S425	PIN	1
2	S320-2	TOP SEAR	1	16	JT420	TRIGGER BAR	1
3	S321-2	BOTTOM SEAR	1	17	JT330	TRIGGER PILLAR	1
4	S325-2	MIDDLE SEAR	1	18	BB268	M2X4	1
5	S318	COVER PLATE	1	19	RN350	TRIGGER SHOE	1
6	S314	TRIGGER GUARD	1	20	RN351	M3 NUT	1
7	S310AT	STRIKER BODY	1	21	RN352	SCREW	1
8	TX398	3x11.8 PIN	1	22	TX381	M5 X 6 SKT SET CONE PT (TUFF LOC)	1
9	S326	2x11.8 PIN	3	23	E496	M3 X 6 SKT CAP	1
10	S421	SCREW	2	24	S322	M4 X 12 CSK SKT	1
11	TX432	ADJUSTER SCREW LOCKING PAD	1	25	TX236	M4 X 16 SKT CAP	1
12	S319	FILLING VALVE SPRING	1	26	S316	M4 X 25 SKT CAP	1
13	S495	TOP SEAR SPRING	1	27	TX460	M4 X 12 SKT CAP	1
14	RN106	SCREW	2				



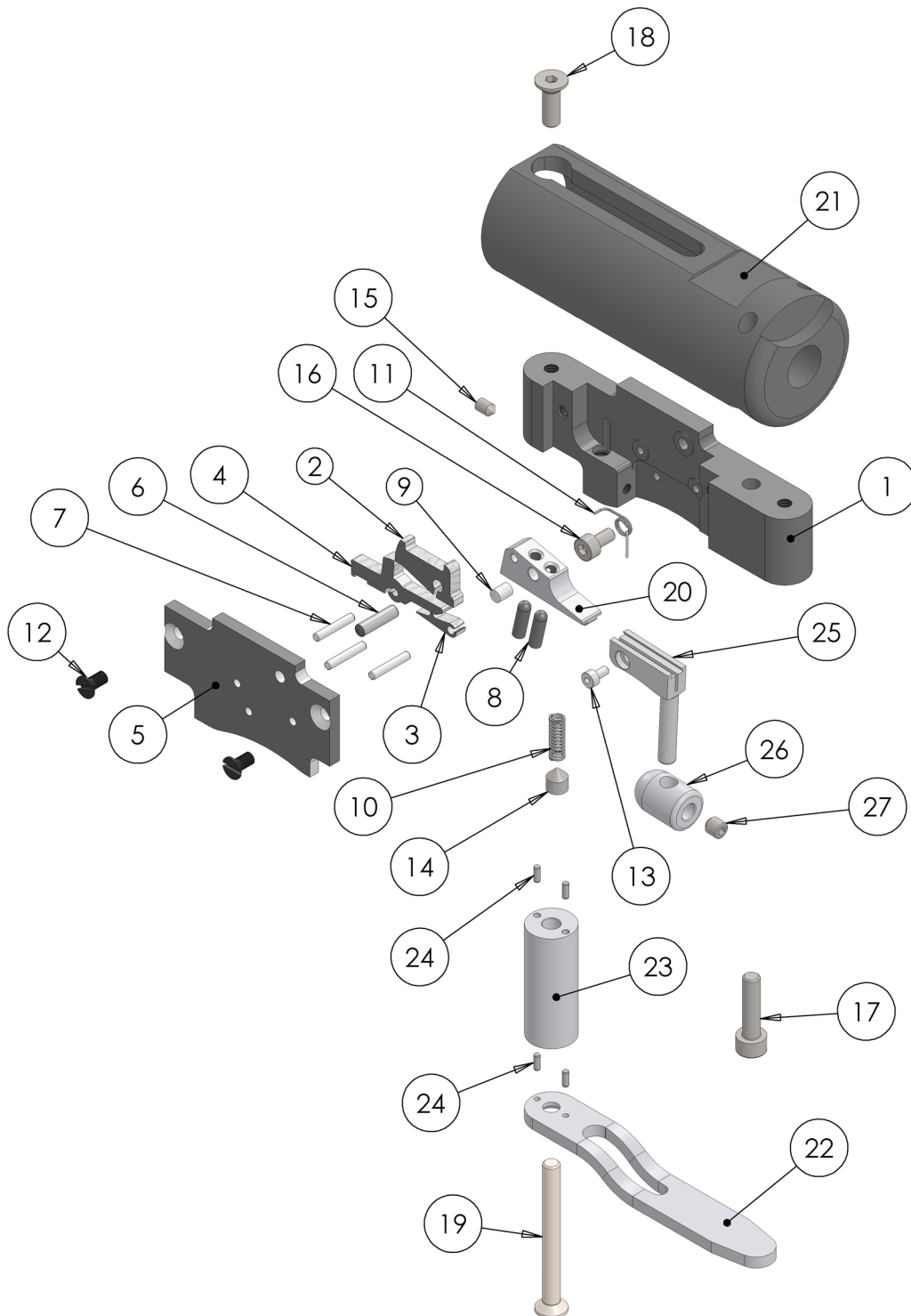
Biathlon Trigger assembly

ITEM NO.	PART NUMBER	DESCRIPTION	QTY.	ITEM NO.	PART NUMBER	DESCRIPTION	QTY.
1	S313	TRIGGER CHASSIS	1	14	JT420	TRIGGER BAR	1
2	S320-2	TOP SEAR	1	15	JT330	TRIGGER PILLAR	1
3	S321-2	BOTTOM SEAR	1	16	BB268	M2X4	1
4	S325-2	MIDDLE SEAR	1	17	RN350	TRIGGER SHOE	1
5	S318	COVER PLATE	1	18	RN351	M3 NUT	1
6	S314	TRIGGER GUARD	1	19	RN352	TRIGGER SCREW SHOE	1
7	tx398	3x11.8 PIN	1	20	TX381	M5 X 6 SKT SET CONE PT WITH TUFF LOC	1
8	S326	2x11.8 PIN	3	21	E496	M3 X 6 SKT CAP	1
9	S421	M3x10	2	22	TX236	M4 X 16 SKT CAP	1
10	TX432	ADJUSTER SCREW LOCKING PAD	1	23	S316	M4 X 25 SKT CAP	1
11	S319	FILLING VALVE SPRING	1	24	TX460	M4 X 12 SKT CAP	1
12	S495	TOP SEAR SPRING	1	25	S322	M4 X 12 CSK SKT	1
13	RN106	M3X6 C/SUNK SLOTTED SCREW	2	26	S310-SL	STRIKER BODY	1



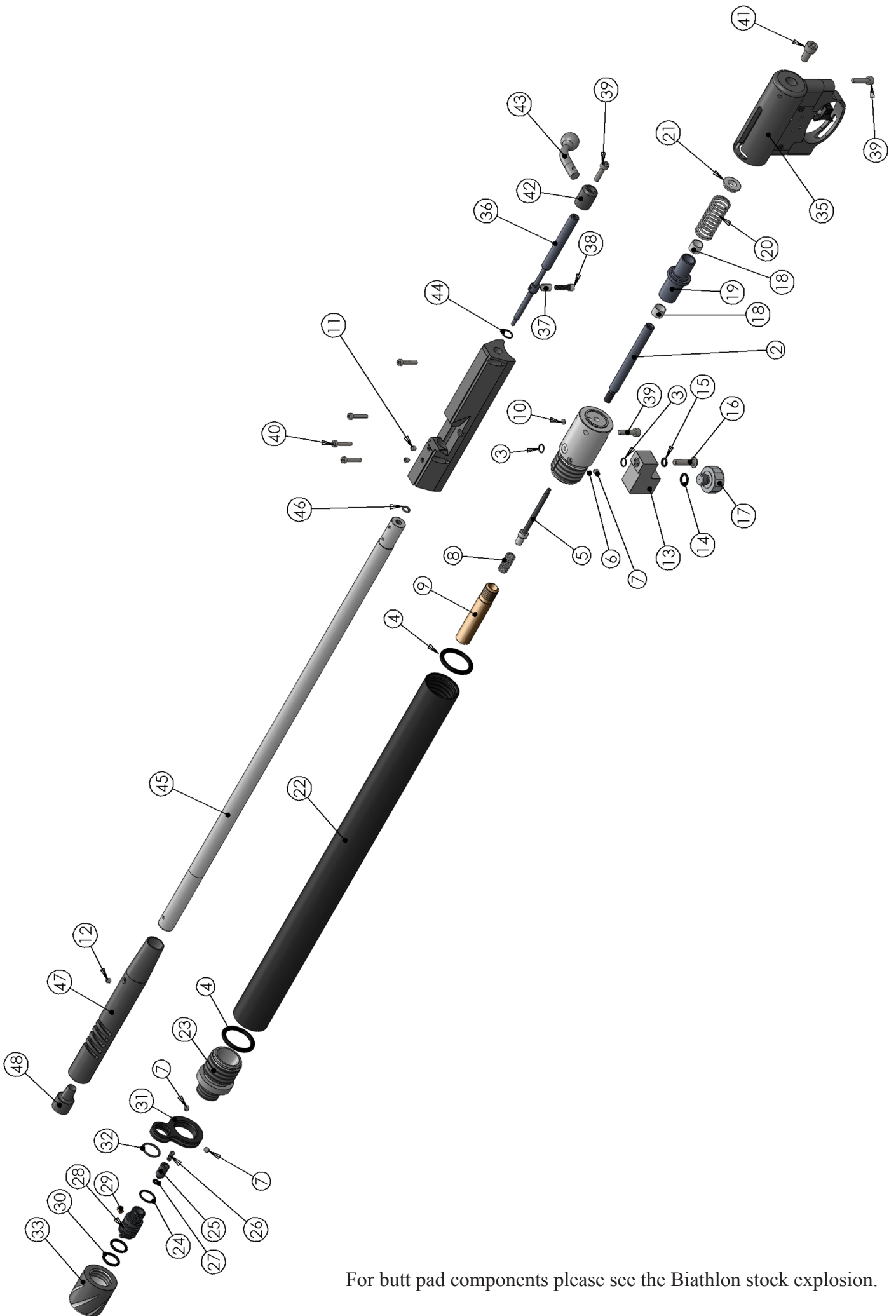
HFT 500 Trigger assembly

ITEM NO.	PART NUMBER	DESCRIPTION	QTY.	ITEM NO.	PART NUMBER	DESCRIPTION	QTY.
1	S313-FT	CHASSIS	1	15	RN191	M3 X 5 SKT SET CONE PT	1
2	S320-2	TOP SEAR	1	16	S496	M3 X 6 SKT CAP	1
3	S321-2	BOTTOM SEAR	1	17	TX236	M4 X 16 SKT CAP	1
4	S325-2	MIDDLE SEAR	1	18	S322	M4 X 12 CSK SKT	1
5	S318-FT	COVER PLATE	1	19	JT316	M4 X 40 CSK SKT	1
6	TX398	3 X 11.8 ROLLER	1	20	JT420	TRIGGER BAR	1
7	S326	2 X 11.8 ROLLER	3	21	S310-SL	STRIKER BODY	1
8	S421	M3 X 10 SKT SET	2	22	JT315-PT1	TRIGGER GUARD - PT1	1
9	TX432	ADJ SCREW LOCKING PAD	1	23	JT315-PT2	TRIGGER GUARD - PT2	1
10	S319	FILLING VALVE SPRING	1	24	S226	1.5 X 4 DOWEL	4
11	S495	TOP SEAR SPRING	1	25	JT422	TRIGGER POST	1
12	RN106	M3 X 6 CSK SLOTTED	2	26	JT424	TRIGGER BUTTON	1
13	BB268	M2 X 4 SKT CAP	1	27	TX228	M4 X 4 SKT SET FL PT	1
14	TX381	M5 X 6 SKT SET CONE PT	1				



MPR FT assembly

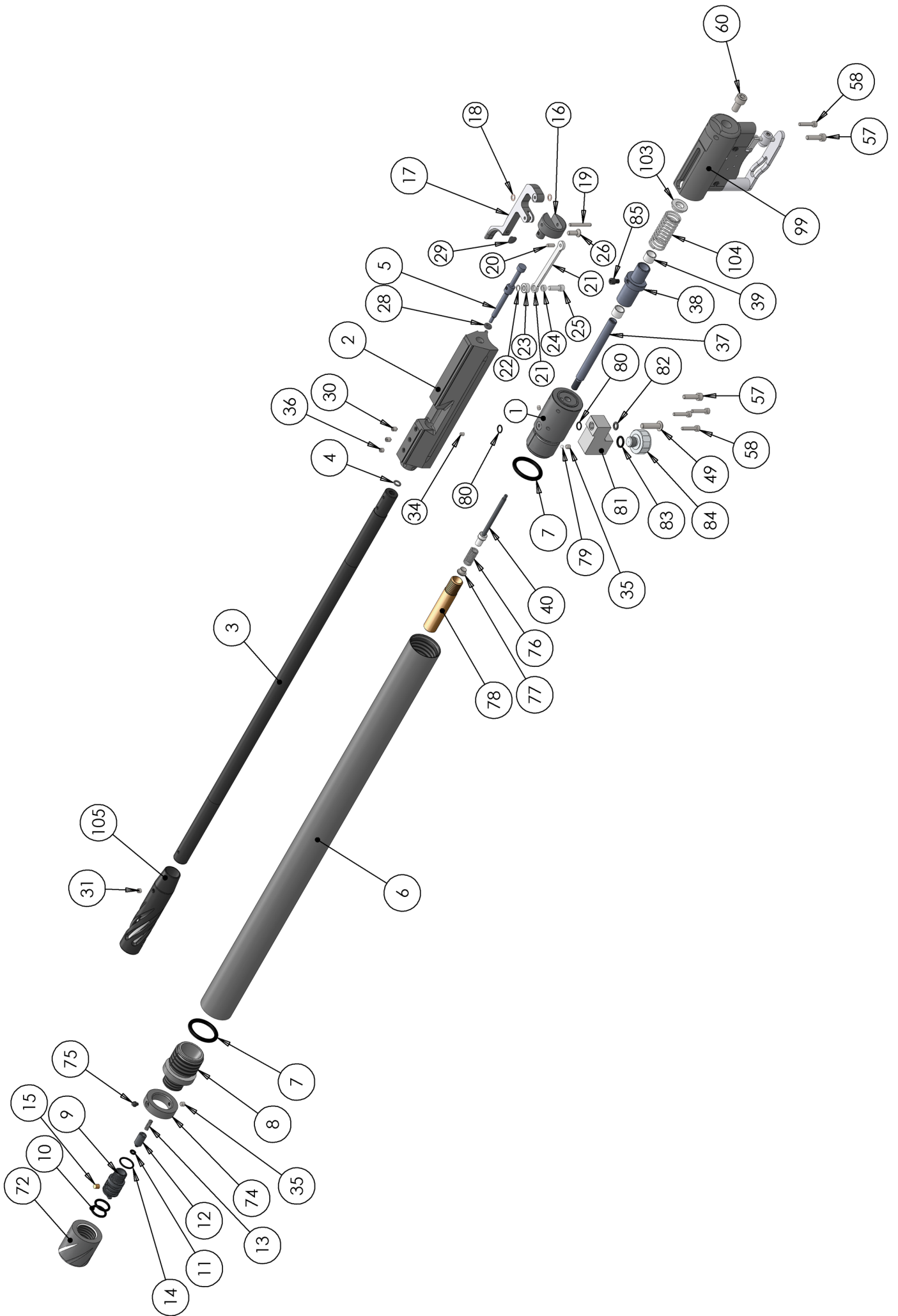
ITEM NO.	PART NUMBER	DESCRIPTION	QTY.	ITEM NO.	PART NUMBER	DESCRIPTION	QTY.
1	S507AT	FIRING VALVE BODY	1	25	S473	FILLING VALVE	1
2	S340	STRIKER ROD	1	26	S319	FILLING VALVE SPRING	1
3	S427	6x1 O RING	2	27	S327	BS005 O RING 90 SHURE	1
4	RN234	BS213 O RING	2	28	S472	MALE CONNECTOR	1
5	S370	FIRING VALVE ASSY	1	29	S471	SINTERED FILTER	1
6	E146	COCKING ARM FRICTION PAD	1	30	S474	MALE CONNECTOR O RING	2
7	TX228	M4 X 4 SKT SET FL PT	3	31	JT483FT	MPR FT BARREL CLAMP - MK2	1
8	S306	FIRING VALVE SPRING	1	32	JT484	BARREL CLAMP O RING	1
9	S360	STD POWER POT ASSY	1	33	E483BK	END CAP	1
10	RN191	M3 X 5 SKT SET CONE PT WITH TUUFF LOCK	1	34	JT400AT	BOLT HOUSING	1
11	JT228	M4 X 5 SKT SET CONE PT	2	35	MPR TRIGGER ASSEMBLY		1
12	E113	M4 X 4 SOC SET CONE PT ST/ST	1	36	S540A	LOADING BOLT SHAFT 4.5CAL	1
13	S640AT	GAUGE MOUNT	1	37	S345	SLEEVE	1
14	RN219-9	BS 011 O RING	1	38	S355	M4X14 SOC CAP	1
15	S536	BS008 O RING	1	39	TX236	M4 X 16 SKT CAP	3
16	JT416	M5 X 18 SKT BTN HD	1	40	RN102A	M3 X 16 SKT CAP	4
17	S645	INDICATOR GAUGE	1	41	RN135	M6 X 12 SOC CAP	1
18	S520-1	BUSH	2	42	S545-1	BOLT SLEEVE	1
19	S520	STRIKER	1	43	S545-4	BOLT KNOB - MK2	1
20	S331	MAIN SPRING	1	44	S650	8x1.25 O RING	1
21	S530	MAIN SPRING GUIDE	1	45	JT112	BARREL	1
22	S335	CYL TUBE - STD NICKEL	1	46	FP121	4.5x1.5 NBR70	1
23	S491	FILLING VALVE BODY	1	47	JT459FT	FIELD TARGET MUZZLE END	1
24	S484	12x1.5 O RING 70 SHURE	1	48	E460B	MUZZLE END PLUG	1



For butt pad components please see the Biathlon stock explosion.

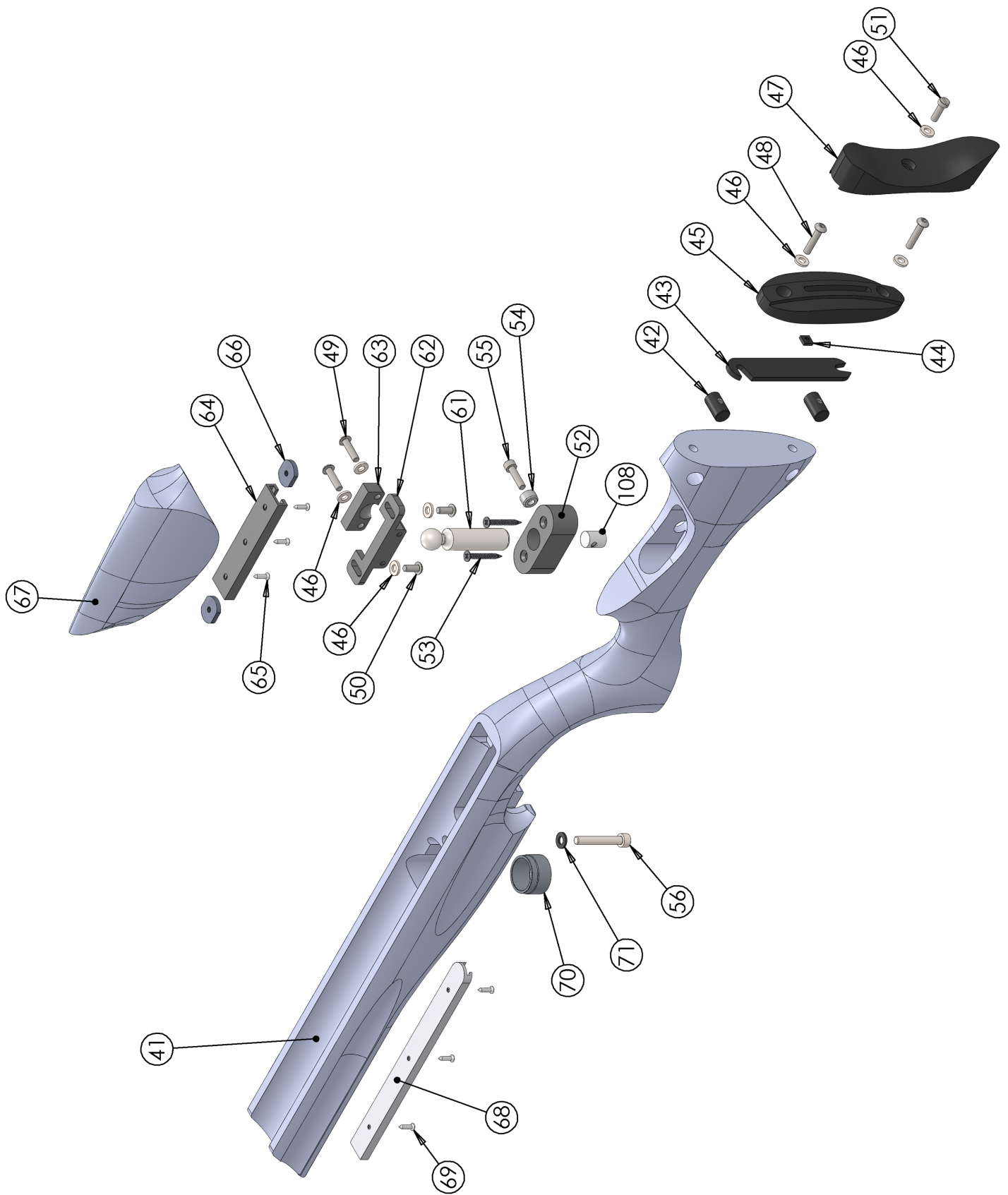
HFT 500 assembly

ITEM NO.	PART NUMBER	DESCRIPTION	QTY.	ITEM NO.	PART NUMBER	DESCRIPTION	QTY.
1	S507-SL	FIRING VALVE BODY	1	31	E113	M4 X 4 SOC SET CONE PT ST/ST	1
2	JT400-SL	HFT BOLT HOUSING	1	35	TX228	M4 X 4 SKT SET FL PT	2
3	E700	BARREL	1	36	E122	M4 X 4 SKT SET FL PT ST/ST	1
4	FP121	4.5 X 1.5 NBR70	1	37	S340	STRIKER ROD	1
5	S540A-SL	.177 LOADING BOLT STEM	1	38	S520-SL	STRIKER	1
6	JT335FT	FT CYLINDER	1	39	S520-1	BUSH	2
7	RN234	BS213 O RING	2	40	S370	FIRING VALVE ASSY	1
8	S491	FILLING VALVE BODY	1	49	JT416	M5 X 18 SKT BTN HD	1
9	S472	MALE CONNECTOR	1	57	TX236	M4 X 16 SKT CAP	2
10	S474	MALE CONNECTOR O RING	2	58	RN102A	M3 X 16 SKT CAP	4
11	S327	BS005 O RING 90 SHURE	1	60	RN135	M6 X 12 SOC CAP	1
12	S473	FILLING VALVE	1	72	E483BK	END CAP - BLACK	1
13	S319	FILLING VALVE SPRING	2	74	JT486	BUFFER SUPPORT	1
14	S484	12x1.5 O RING 70 SHURE	1	75	E870	GROMMET	1
15	S471	SINTERED FILTER	1	76	S306	FIRING VALVE SPRING	1
16	S130	COCKING ARM PIVOT BLOCK	1	77	S365	POT SPRING GUIDE	1
17	S125	COCKING ARM	1	78	S360	STD POWER POT ASSY	1
18	E160	M3 CRINKLE WASHER	2	79	E146	COCKING ARM FRICTION PAD	1
19	E144	3 X 24 ROLLER	1	80	S427	6 X 1 O RING	2
20	E127	3 X 8 ROLLER	1	81	S640AT	GAUGE MOUNT	1
21	S264	COCKING LINK	1	82	S536	BS008	1
22	S541-1	BEARING SHIM	2	83	RN219-9	BS 011 O RING	1
23	S541	LOADING BOLT BEARING	1	84	S645	INDICATOR GAUGE	1
24	S542	SIDE LEVER BUSH	1	85	S356H	STRIKER SCREW	1
25	S355H-SL	M4 X 16 SCREW	1	99	HFT 500 CHASSIS ASSEMBLY		1
26	S322	M4 X 12 CSK SKT	2	103	S530	MAIN SPRING GUIDE	1
28	S142	1.24 X 2.62 NBR 70 (BS102)	1	104	S331	MAIN SPRING	1
29	TX227	BUFFER	1	105	JT453	FT MUZZLE END ASSEMBLY	1
30	E281	M4 X 6 SKT SET CONE PT ST/ST	2				



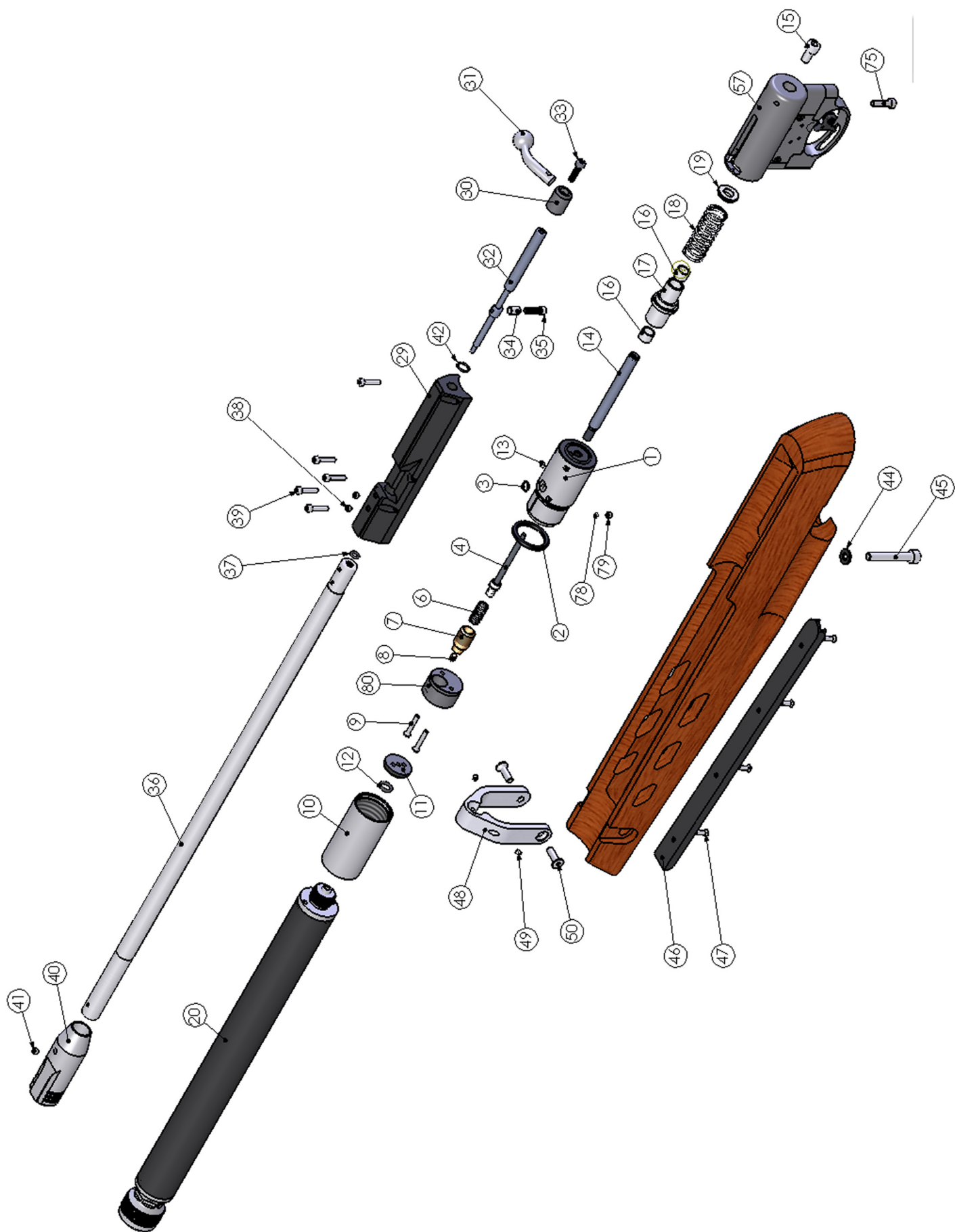
HFT 500 Stock assembly

ITEM NO.	PART NUMBER	DESCRIPTION	QTY.
41	S676-PT1	MAIN STOCK	1
42	S685	ROLLER NUT - BLACK	2
43	CZ028-1	4mm SPACER	1
44	CZ080-4	LOCKING PLATE	1
45	CZ080-2	BUTT PAD BACKING PLATE	1
46	RN431	M5 WASHER	7
47	CZ080-1	BUTT PAD	1
48	S641	M5 X 25 SKT BTN	2
49	JT416	M5 X 18 SKT BTN HD	2
50	RN430	M5 X 12 SKT BTN	2
51	CZ080-3	M5 X 16 CHEESE HD	1
52	S775	CHEEK PIECE PILLAR BOTTOM PLATE	1
53	S780	No6 X 1/2" POZI C/SUNK - BLACK	2
54	E425	ADJUSTER LOCKING BUSH	1
55	PS418	M5 X 20 SKT CAP	1
56	S625	M6 X 40 SKT CAP	1
61	S740	CHEEK PIECE PILLAR	1
62	S770-PT1	CHEEK PIECE TOP CLAMP - PT1	1
63	S770-PT2	CHEEK PIECE TOP CLAMP - PT 2	1
64	E335	CHEEK PIECE RAIL	1
65	KS445	No 6 3/8" POZI CSK	3
66	E340	RAIL NUT	2
67	S676-PT2	CHEEK PIECE	1
68	JT745	RAIL - HFT500	1
69	S750	No 6 3/8" POZI CSK	3
70	JT640R	STOCK RING - HFT500	1
71	S655	6 X 12 X 1.5 WASHER	1
108	E320	PILLAR NUT	1



MPR 10m assembly

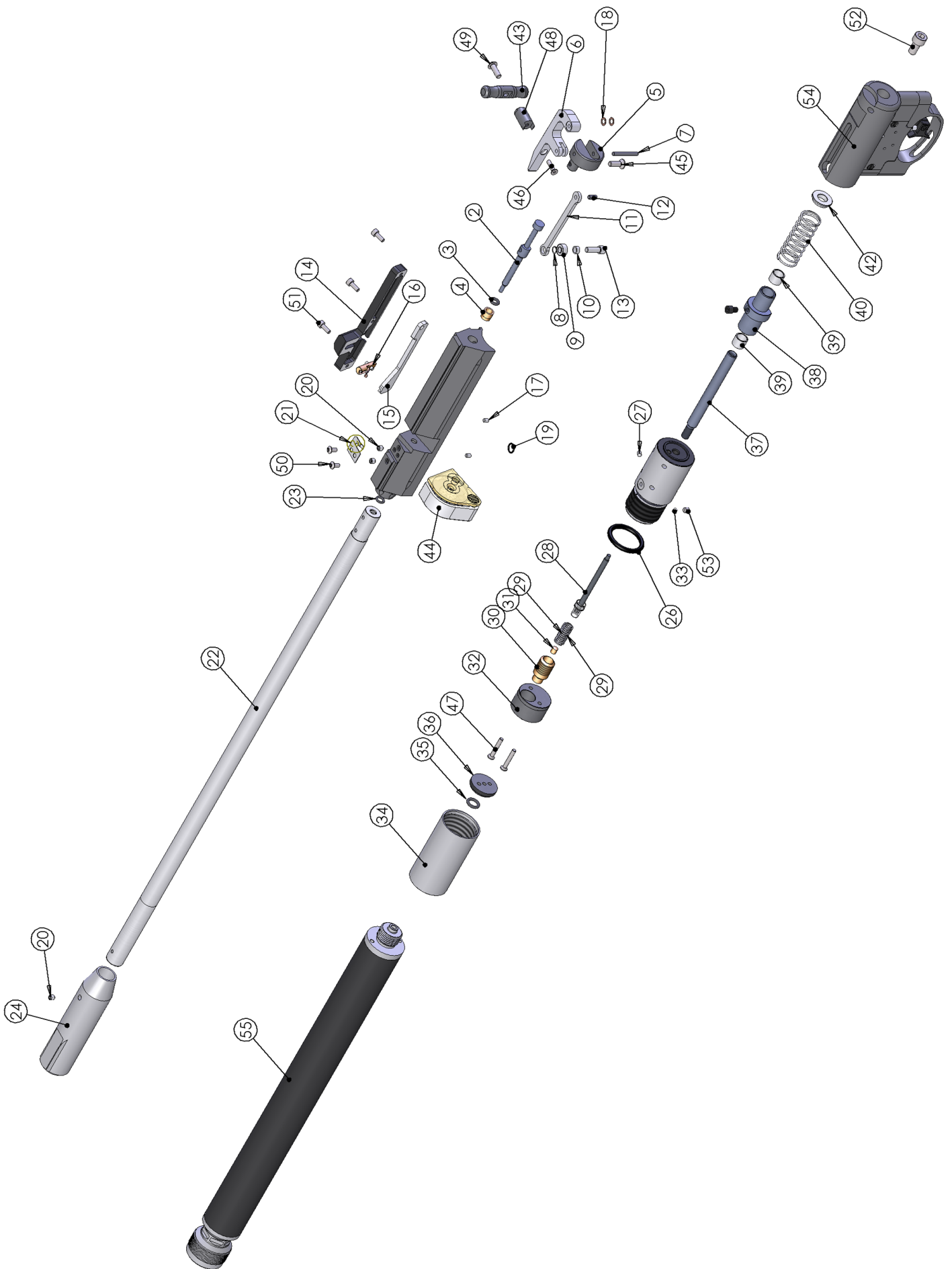
ITEM NO.	PART NUMBER	DESCRIPTION	QTY.	ITEM NO.	PART NUMBER	DESCRIPTION	QTY.
1	JT507	FIRING VALVE BODY	1	33	TX236	M4x16 CAP	1
2	RN234	BS213 O RING	3	34	S345	SLEEVE	1
3	S427	6x1 O RING	1	35	S355	M4X14 SOC CAP	1
4	S370	FIRING VALVE ASSEMBLY	1	36	JT112	BARREL	1
6	S306	FIRING VALVE SPRING	1	37	FP121	4.5x1.5 NBR70	1
7	JT360	FIRING VALVE SPRING RETAINER	1	38	JT228	M4x5 CONE POINT	2
8	S471	SINTERED FILTER	1	39	RN102A	M3X16 SOC CAP	5
9	JT340	INFILL FIXING SCREW	2	40	JT459S	MUZZLE END SPORTER	1
10	JT336-1	CYLINDER EXTENSION	1	JT459	JT459	MUZZLE END PRECISION	1
11	JT336-2	GLAND NUT	1	E113	E113	M4x5 CONE POINT	1
12	JT338	CYLINDER EXTENSION O RING	1	S650	S650	8x1.25 O RING	1
13	RN191	ADJUSTER SCREW	1	STOCK	STOCK		1
14	S340	STRIKER ROD	1	S655	S655	6 X 12 X 1.5 WASHER	1
15	RN135	SCREW	1	S625	S625	STOCK SCREW	1
16	S520-1	BUSH	2	JT440	JT440	ACCESSORY RAIL	1
17	JT520	STRIKER	1	KS445	KS445	No 6 3/8" POZI CSK	4
18	JT331	MAIN SPRING	1	JT380	JT380	BARREL CLAMP	1
19	JT530	REAR SPRING GUIDE	1	S303	S303	M3x4 FLAT POINT	2
20	JT235A	CYLINDER ASSEMBLY	1	TX435	TX435	STOCK SCREW	2
29	JT400	BOLT HOUSING	1	MPR 10m TRIGGER ASSEMBLY	MPR 10m TRIGGER ASSEMBLY		1
30	S545-1	BOLT SLEEVE	1	E146	E146	COCKING ARM FRICTION PAD	1
31	S545-2	BOLT KNOB	1	TX228	TX228	M4 X 4 SKT SET FL PT	1
32	S540A	LOADING BOLT SHAFT	1	JT337A	JT337A	CYL EXT INSERT	1



For butt pad components please see the Biathlon stock explosion.

MPR Biathlon assembly

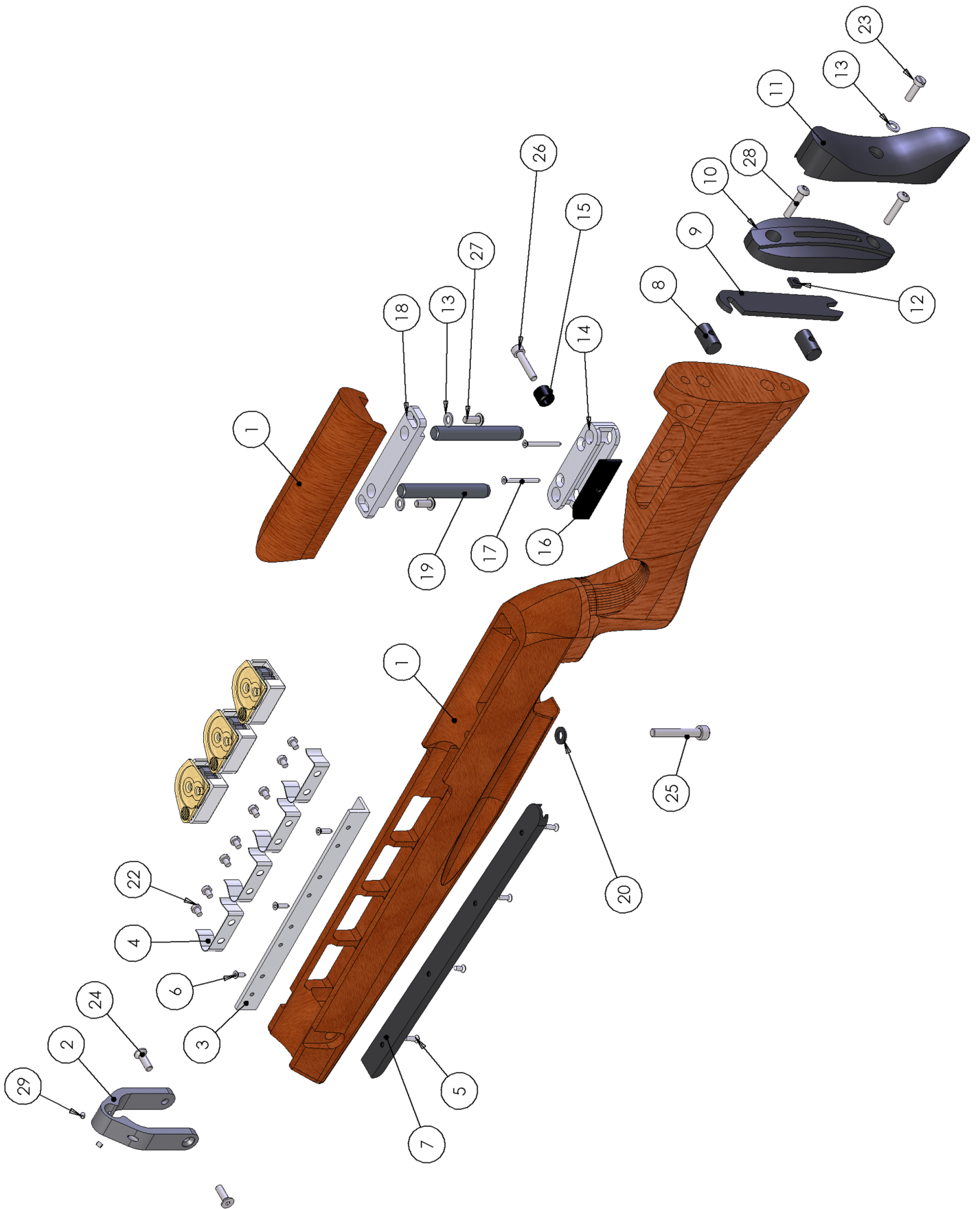
ITEM NO.	PART NUMBER	DESCRIPTION	QTY.	ITEM NO.	PART NUMBER	DESCRIPTION	QTY.
1	JT500-SL	MPR M/S BOLT HSE	1	29	S306	FIRING VALVE SPRING	1
2	S540A-SL	.177 LOADING BOLT STEM	1	30	JT360	FIRING VALVE SPRING RETAINER	1
3	S140	LOADING BOLT DETENT BUFFER .22	1	31	S471	SINTERED FILTER	1
4	S501-SL	BOLT HSE BUSH .22 - SL	1	32	JT337A	CYLINDER INSERT ASSEMBLY	1
5	S130	COCKING ARM PIVOT BLOCK	1	33	E146	COCKING ARM FRICTION PAD	1
6	E125	COCKING ARM BIATHLON	1	34	JT336-1	CYLINDER EXTENSION	1
7	E144	3x23.8 PIN	1	35	JT338	CYLINDER EXTENSION O RING	1
8	S541-1	BEARING SHIM	1	36	JT336-2	GLAND NUT	1
9	S541	LOADING BOLT BEARING - SIDE LEVER	1	37	S340	STRIKER ROD	1
10	S542	SIDE LEVER BUSH - FAC	1	38	JT520-SL	MPR 10m STRIKER - SIDE LEVER	1
11	S264	COCKING LINK	1	39	S520-1	BUSH	2
12	E127	3x11.8 PIN	1	40	JT331	MAIN SPRING	1
13	S355H-SL	M4x16 TURNED HEAD	1	41	S356H	STIRKER SPRING	1
14	S550	SIDE PLATE	1	42	JT530	REAR SPRING GUIDE 7 JOULE	1
15	S560	CAM	1	43	JT125-1	COCKING LEVER HANDLE	1
16	S515A	INDEXING POST ASSY	1	44	S558	.177 MAGAZINE - 5 SHOT	1
17	S303	M3x4 FLAT POINT	2	45	S322	M4 X 12 CSK SKT	1
18	E160	M3 CRINKLE WASHER	2	46	JT128	M3 X 12 CSK SKT	1
19	S427	6x1 O RING	1	47	JT340	M3 X 20 CSK SKT	2
20	JT228	M4x5 CONE POINT	3	48	JT126	BIATHLON COCKING ARM EXTENTION	1
21	S505	MAGAZINE SPRING	1	49	JT127	M4 X 12 SKT BT	1
22	JT112	BARREL	1	50	RN193	M3 X 6 SKT BTN HD	2
23	FP121	4.5x1.5 NBR70	1	51	S565	M3 X 8 SKT CAP	3
24	JT459S-B	MUZZLE END	1	52	RN135	M6 X 12 SOC CAP	1
25	JT507-SL	MPR FIRING VALVE BODY -SIDE LEVER	1	53	TX228	M4 X 4 SKT SET FL PT	1
26	RN234	BS213 O RING	1	54	BIATHLON TRIGGER UNIT		1
27	RN191	ADJUSTER SCREW	1	55	JT235A	MPR CYLINDER ASSY	1
28	S370	FIRING VALVE ASSY	1				

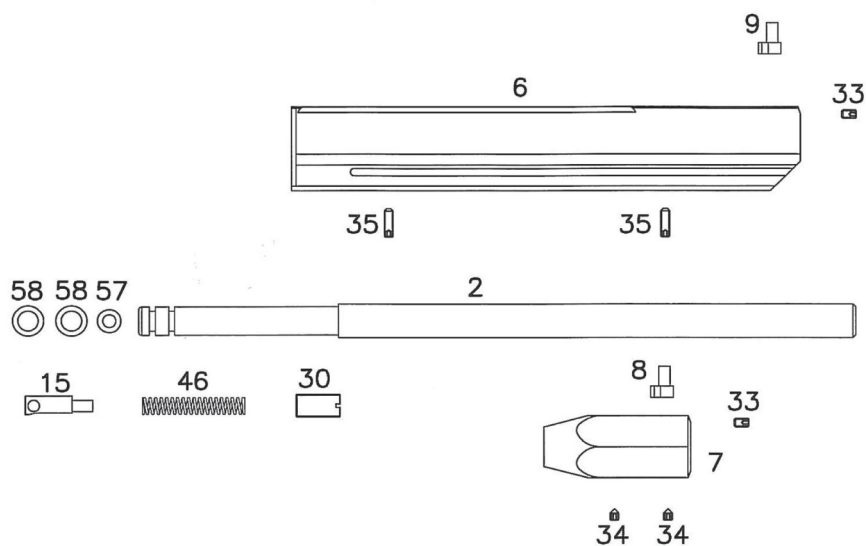


For butt pad components please see the Biathlon stock explosion.

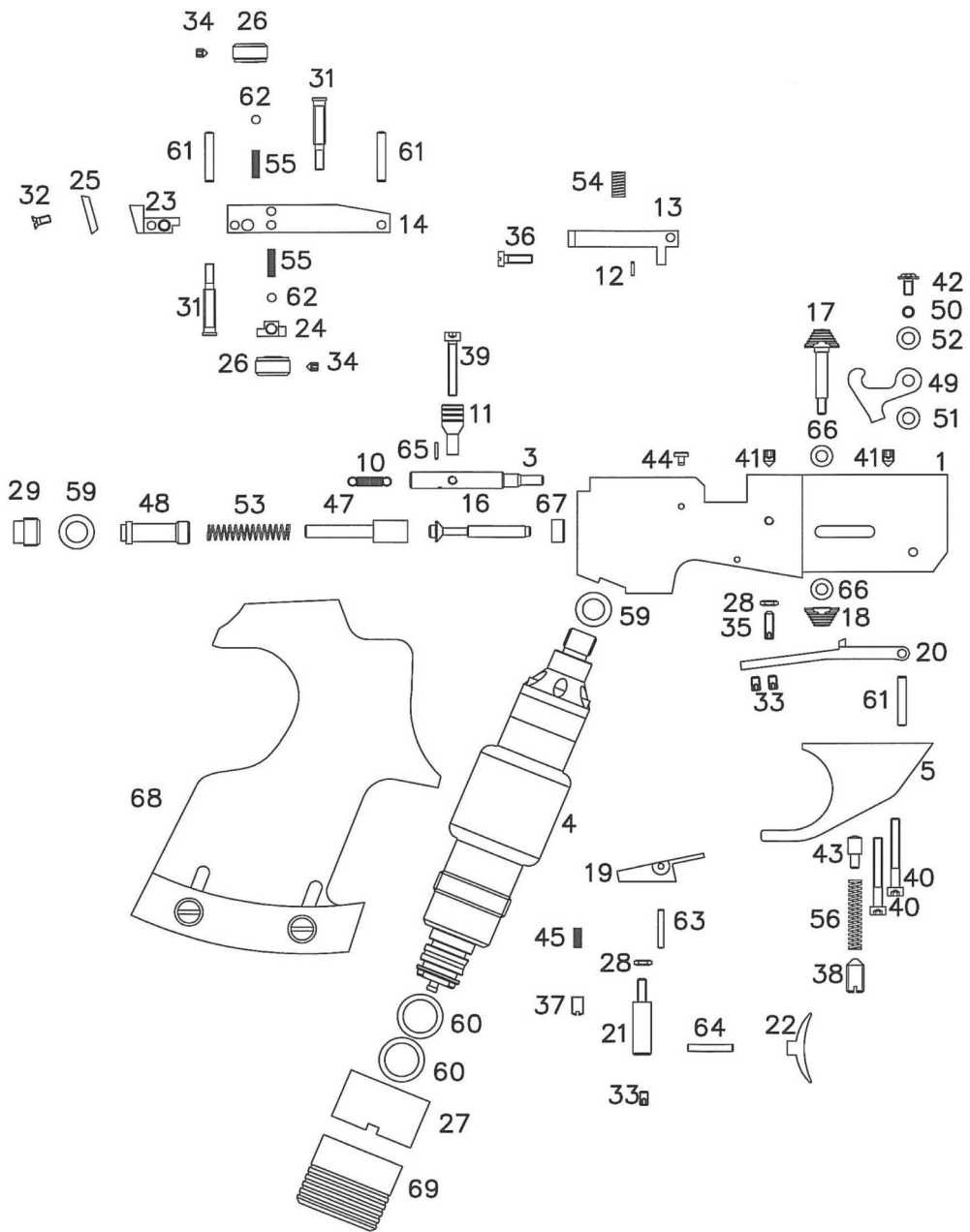
MPR Biathlon stock assembly

ITEM NO.	PART NUMBER	DESCRIPTION	QTY.	ITEM NO.	PART NUMBER	DESCRIPTION	QTY.
1	Stock		1	16	RN415	ADJUSTER LOCKING PLATE	1
2	JT380-SL	BARREL CLAMP - SIDE LEVER	1	17	RN435	No 6 1 1/4" POZI CSK	2
3	JT442	MAGAZINE RAIL	1	18	RN400	CHEEKPIECE MOUNTING PLATE	1
4	KS631	MAGAZINE SPRING	4	19	RN410FT	ADJUSTER PILLAR	2
5	KS445	No 6 3/8" POZI CSK	5	20	S655	6 X 12 X 1.5 WASHER	1
6	RN445	No 6 1 1/4" POZI CSK	2	21	S558	.177 MAGAZINE - 5 SHOT	3
7	JT440	ACCESSORY RAIL	1	22	JT445	M4 X 5 CHEESE HD	8
8	CZ078	SLEEVE NUT	2	23	CZ080-3	M5 X 16 CHEESE HD	1
9	CZ028-1	4mm SPACER	1	24	TX435	M5 X 16 CSK SKT	2
10	CZ080-2	BUTTPAD BACKING PLATE	1	25	S625	M6 X 40 SKT CAP	1
11	CZ080-1	BUTT PAD	1	26	RN420	M5 X 25 SKT CAP ST/ST	1
12	CZ080-4	LOCKING PLATE	1	27	RN430	M5 X 12 SKT BTN	2
13	RN431	WASHER	3	28	S641	M5 X 25 SKT BTN	2
14	RN405	GUIDE BLOCK	1	29	S303	M3 X 4 SKT SET FL PT	2
15	RN425	ADJUSTER LOCKING BUSH	1				



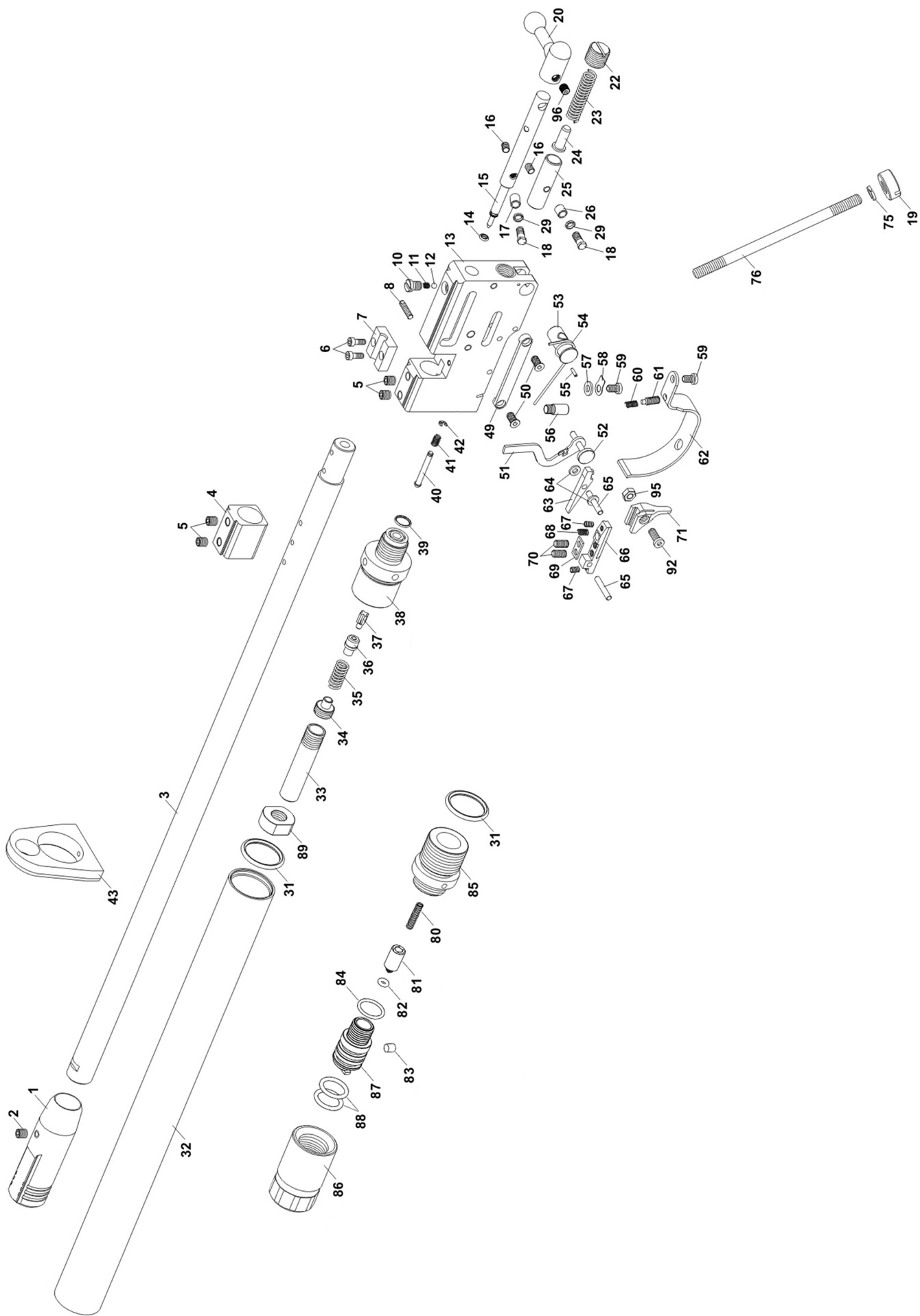


1	Rám pistole	36	Šroub M3x10 (2x)	1	Pistol frame	36	M3x10 bolt (2x)
2	Hlaveň	37	Šroub převodové páky (dorazu)	2	Barrel	37	Gearing lever bolt (stopper)
3	Píst závěru	38	Šroub M6x12	3	Breech piston	38	M6x12 bolt
4	Nádoba tlaková	39	Šroub M3x20	4	Pressure vessel	39	M3x20 bolt
5	Předpažbí	40	Šroub M3x25 (2x)	5	Forearm	40	M3x25 bolt (2x)
6	Plášť hlavně (pouze u modelu Sport)	41	Šroub M4x6 (2x)	6	Barrel shroud (Sport model only)	41	M4x6 bolt (2x)
7	Základna mušky (pouze u modelu Classic)	42	Šroub M3x6	7	Foresight base (Classic model only)	42	M3x6 bolt
8	Muška Classic	43	Čep spoušťové páky	8	Foresight Classic	43	Gearing lever pin
9	Muška Sport	44	Čep	9	Foresight Sport	44	Pin
10	Pružina pístu závěru	45	Pružina spouště	10	Breech piston spring	45	Trigger spring
11	Ovladač závěru	46	Pružina bicí	11	Breech button	46	Striking spring
12	Kolík Ø1x5	47	Vedení pružiny pístu	12	Ø 1X5 post	47	Piston spring guide
13	Nosič hledí (rám)	48	Pouzdro pružiny pístu	13	Rear sight base (frame)	48	Piston spring bush
14	Nosič hledí	49	Páčka pojistky	14	Rear sight base	49	Safety pin lever
15	Kladívko	50	Podložka distanční	15	Hammer	50	Support
16	Píst	51	Podložka	16	Piston	51	Support
17	Tlačítko kladívka levé	52	Podložka talířová	17	Hammer button left	52	Support
18	Tlačítko kladívka pravé	53	Pružina pístu	18	Hammer button right	53	Piston spring
19	Páka převodová	54	Pružina hledí	19	Gearing lever	54	Rearsight spring
20	Páka spoušťová	55	Pružina aretace (2x)	20	Trigger lever	55	Locking spring (2x)
21	Čep převodové páky	56	Pružina spoušťové páky	21	Gearing lever pin	56	Trigger lever spring
22	Spoušť	57	Těsnění "O" kroužek 4,48x1,78	22	Trigger	57	"O" packing ring 4,48x1,78
23	Nosič plátku hledí	58	Těsnění "O" kroužek 6,9x1,8 (2x)	23	Rear sight insert carrier	58	"O" packing ring 6,9x1,8 (2x)
24	Matice vertikálního posuvu	59	Těsnění "O" kroužek 7,6x2,4	24	Nut of vertical travel	59	"O" packing ring 7.6x2.4
25	Plátek hledí	60	Těsnění "O" kroužek 12x2 (2x)	25	Rear sight insert	60	"O" packing ring 12x2 (2x)
26	Kolečko stavěcí (2x)	61	Kolík Ø 3x18 (3x)	26	Setting roller (2x)	61	Ø 3x18 (3x) post
27	Matice střenky	62	Kulička aretace Ø 3 (2x)	27	Handle nut	62	Locking ring Ø 3 (2x)
28	Matice M3 (2x)	63	Kolík Ø 2x14	28	M3 nut (2x)	63	Ø 2x14 post
29	Šroub těsnící	64	Kolík Ø 2,5x16	29	Packing bolt	64	Ø 2.5x16 post
30	Šroub napínací	65	Kolík Ø 1x6	30	Tension bolt	65	Ø 1x6 post
31	Šroub posuvu (2x)	66	Podložka plastová	31	Shift bolt (2x)	66	Support
32	Šroub M2,5x6 (2x)	67	Těsnění teflonové	32	M2.5x6 bolt (2x)	67	Teflon packing
33	Šroub M3x5 (4x)	68	Střenka	33	M3x5 bolt (4x)	68	Grip
34	Šroub M3x4 (2x-Sport; 4x-Classical)	69	Krytka nádobky	34	M3x4 bolt (2x-Sport; 4x-Classical)	69	Cylinder cap
35	Šroub M3x10 (3x)			35	M3x10 bolt (3x)		



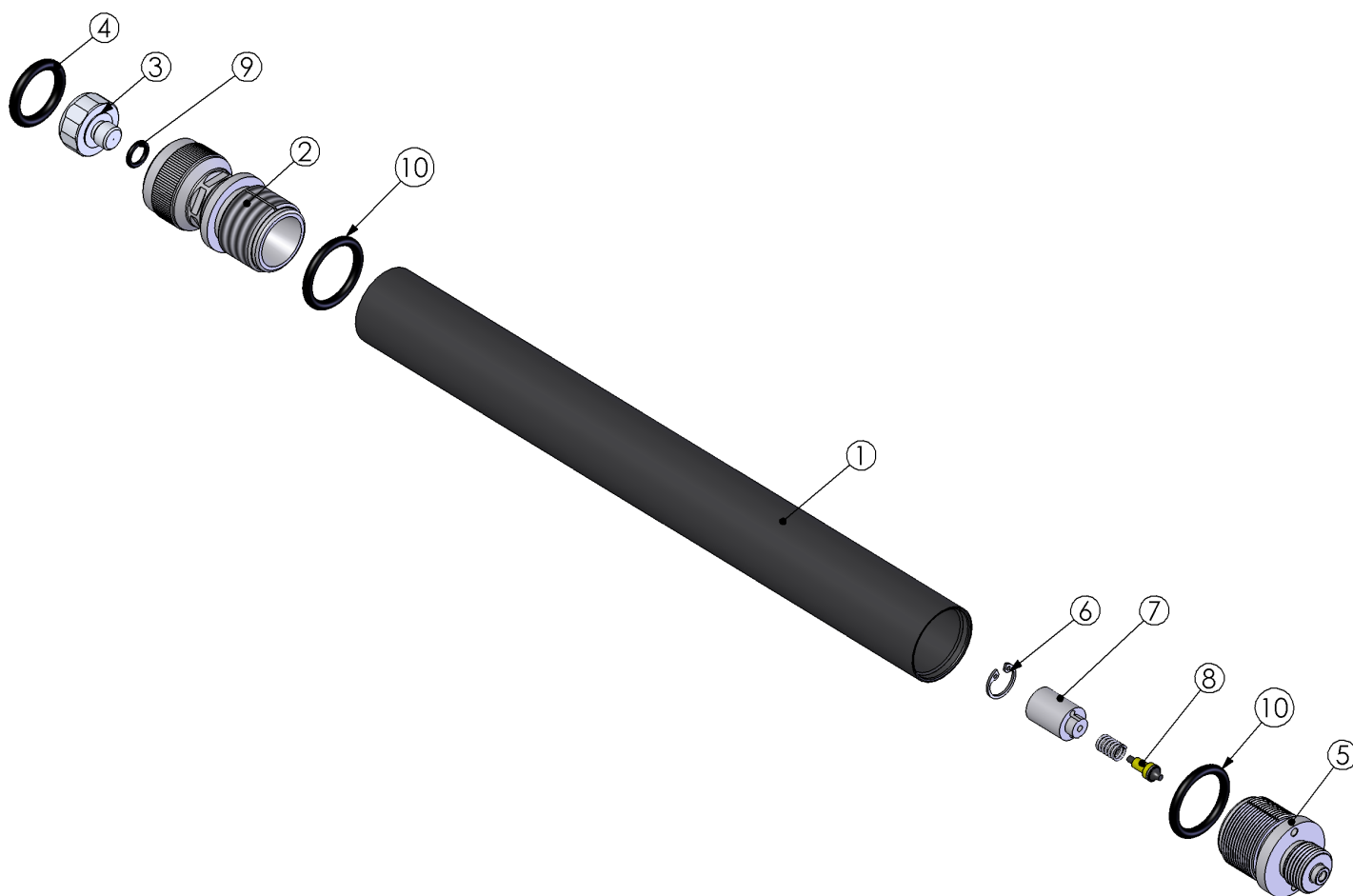
S200 assembly

ITEM NO.	PART NUMBER	DESCRIPTION	QTY.	ITEM NO.	PART NUMBER	DESCRIPTION	QTY.
1	S211	MUZZLE - DOVETAIL	1	42	CZ042	CIRCLIP	1
	CZ093	MUZZLE - SPORTER		43	CZ043	CYLINDER SUPPORT	1
2	TX228	MUZZLE END SCREW	1	49	CZ049	COCKING ARM GUIDE	1
	CZ003-1	BARREL - 177	1	50	CZ050	COCKING ARM GUIDE SCREW	2
	CZ003-2	BARREL - 22	1	51	CZ051	COCKING ARM	1
4	CZ004	SIGHT BASE	1	52	CZ052	COCKING ARM PIVOT	1
5	RN113	SCREW	2	53	CZ053	NUT SOCKET	1
6	CZ006	PELLET CHANNEL SCREW	2	54	CZ054	COCKING ARM SPRING	1
	CZ007	PELLET CHANNEL - 177		55	CZ055	BISSEL PIN	1
	CZ007A	PELLET CHANNEL - 22	1	56	CZ056	FASTENING SCREW	1
8	RN191	TRANSFER PORT SCREW	1	57	FP188	WASHER	1
10	CZ010	BALL CATCH BODY	1	58	CZ058	LATCH WASHER	1
11	CZ011	BALL CATCH SPRING	1	59	CZ059	TRIGGER GUARD SCREW	2
12	CZ012	M3 BALL BEARING	1	60	CZ060	LEVER SPRING	1
13	CZ013	MAIN BODY	1	61	CZ061	REAR ADJUSTMENT SCREW	1
14	CZ014	LOADING BOLT O RING	1	62	CZ062	TRIGGER GUARD	1
	CZ015-1/3	LOADING BOLT - 177		63	CZ063	TRIGGER LEVER	1
	CZ015-2/3	LOADING BOLT - 22	1	64	CZ064	DISTANCE WASHER	2
16	TX228	SCREW	2	65	CZ065	SEAR PIN	2
17	CZ017	ROLLER BUSH	1	66	CZ066	TRIGGER BASE	1
18	CZ018	LOADING BOLT SCREW	2	67	CZ067	SCREW	2
19	CZ019	NUT	1	68	CZ068	BASE SPRING	1
20	CZ020-3	LOADING BOLT HANDLE MK3	1	69	CZ069	LOCKING WASHER	1
22	CZ022AT	MAINSRING ADJUSTER	1	70	CZ070	FRONT ADJUSTMENT SCREW	2
23	CZ023	MAINSRING	1	71	CZ071	TRIGGER BLADE	1
24	CZ024	MAINSRING GUIDE	1	75	CZ075	WASHER	1
25	CZ025	STRIKER	1	76	CZ076	CONNECTING SCREW	1
26	CZ026	ROLLER	1	80	S319	SPRING	1
29	CZ029	ROLLER BUSH	2	81	S473	FILLING VALVE	1
31	CZ031	O RING	2	82	S327	O RING	1
32	CZ032	CYLINDER	1	83	S471	FILTER	1
33	CZ033	POT	1	84	S484	O RING	1
34	CZ034	VALVE CAP	1	85	CZ085-2	FILLING VALVE BODY	1
35	CZ035	VALVE SPRING	1	86	CZ086	COVER	1
36	CZ036	FIRING VALVE SEAL	1	87	S472	MALE CONNECTOR	1
37	CZ037	FIRING VALVE GATE	1	88	S474	O RING	2
38	CZ038	END PLUG	1	89	CZ089	LATCHING NUT	1
39	CZ039	O RING	1	92	CZ092	SCREW	1
40	CZ040	STRIKER PIN	1	95	CZ095	NUT	1
41	CZ041	STRIKING PIN SPRING	1	96	S581	SCREW	1



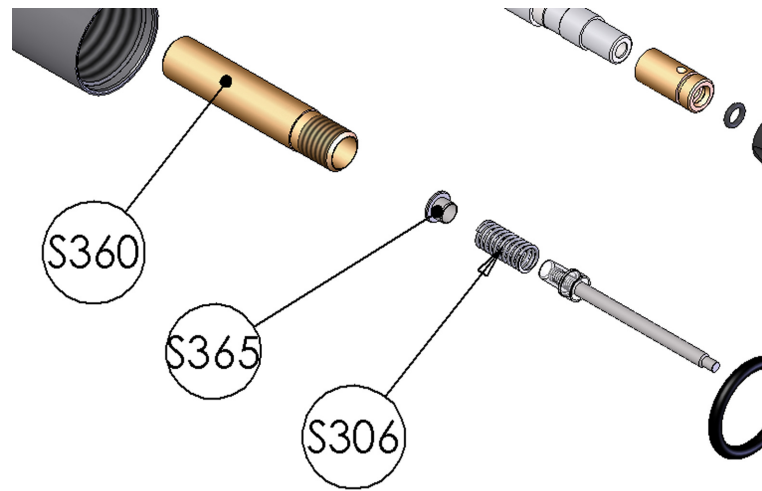
MPR cylinder assembly

ITEM NO.	PART NUMBER	DESCRIPTION	QTY.
1	RN235	CYL TUBE	1
2	JT490	GAUGE BODY	1
3	S645	INDICATOR GAUGE	1
4	RN241	20X4 O RING	1
5	JT491	FILLING VALVE BODY	1
6	JT102	BS1300-14 CIRCLIP	1
7	JT103	FILLING VALVE SPRING RET	1
8	RN239	FILLING VALVE	1
9	RN219-9	BS 011 O RING	1
10	RN234	BS213 O RING	2



S400, S410, S510, TDR & MPR FT Firing pot supplement.

As of September 2013 these models will be fitted with a new component in the firing valve assembly. We have added a top hat shape piece to help seat the spring.



Notes:

Air Arms, Unit 6, Hailsham Industrial Park, Diplocks
Way, Hailsham, East Sussex, England BN27 3JF.

Tel: 01323 845853. Fax: 01323 440573.

Website: www.air-arms.co.uk

Email: general@air-arms.co.uk